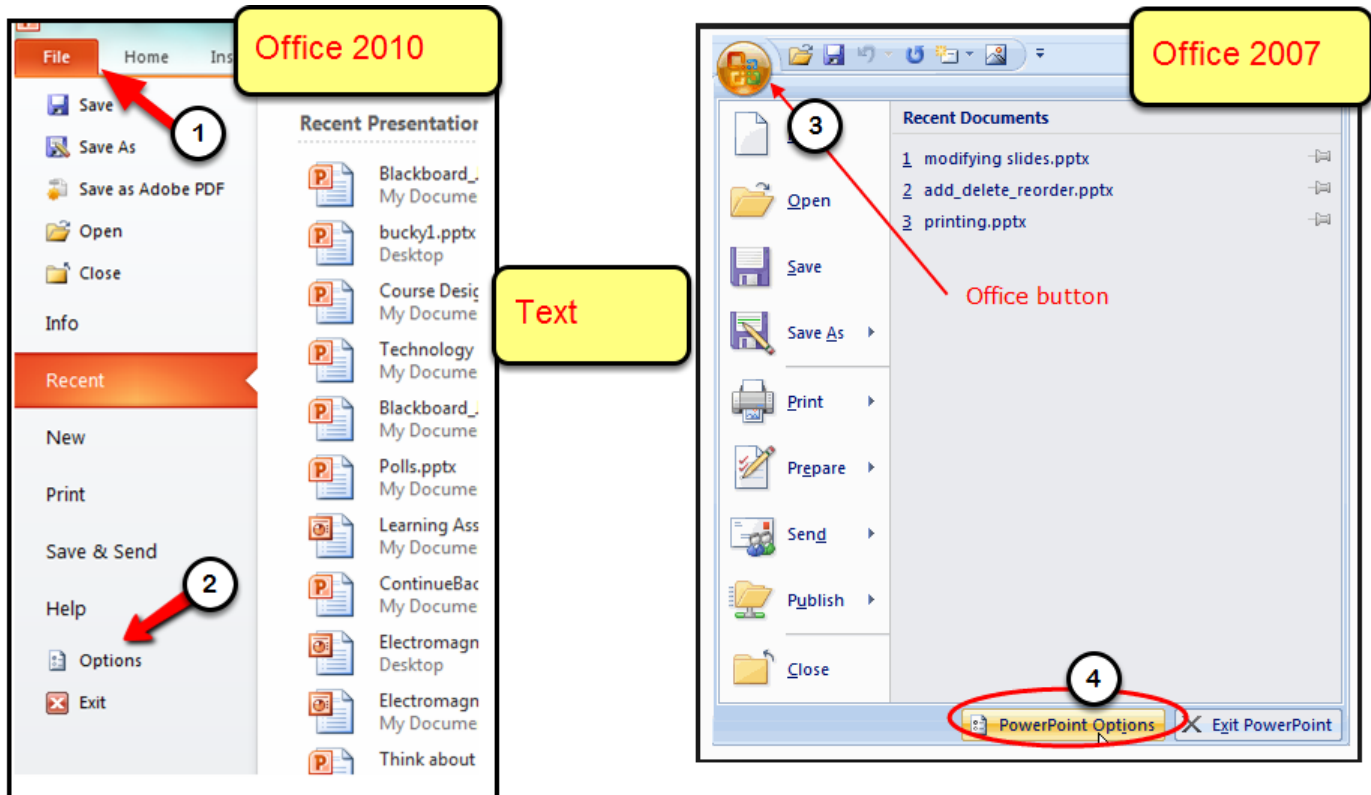


## When the Adobe Presenter Menu Disappears

Adobe Presenter acts as a Add-In within Powerpoint on Windows. If it has a glitch it can become disabled and the Adobe Presenter menu disappears. This is how to enable it again.

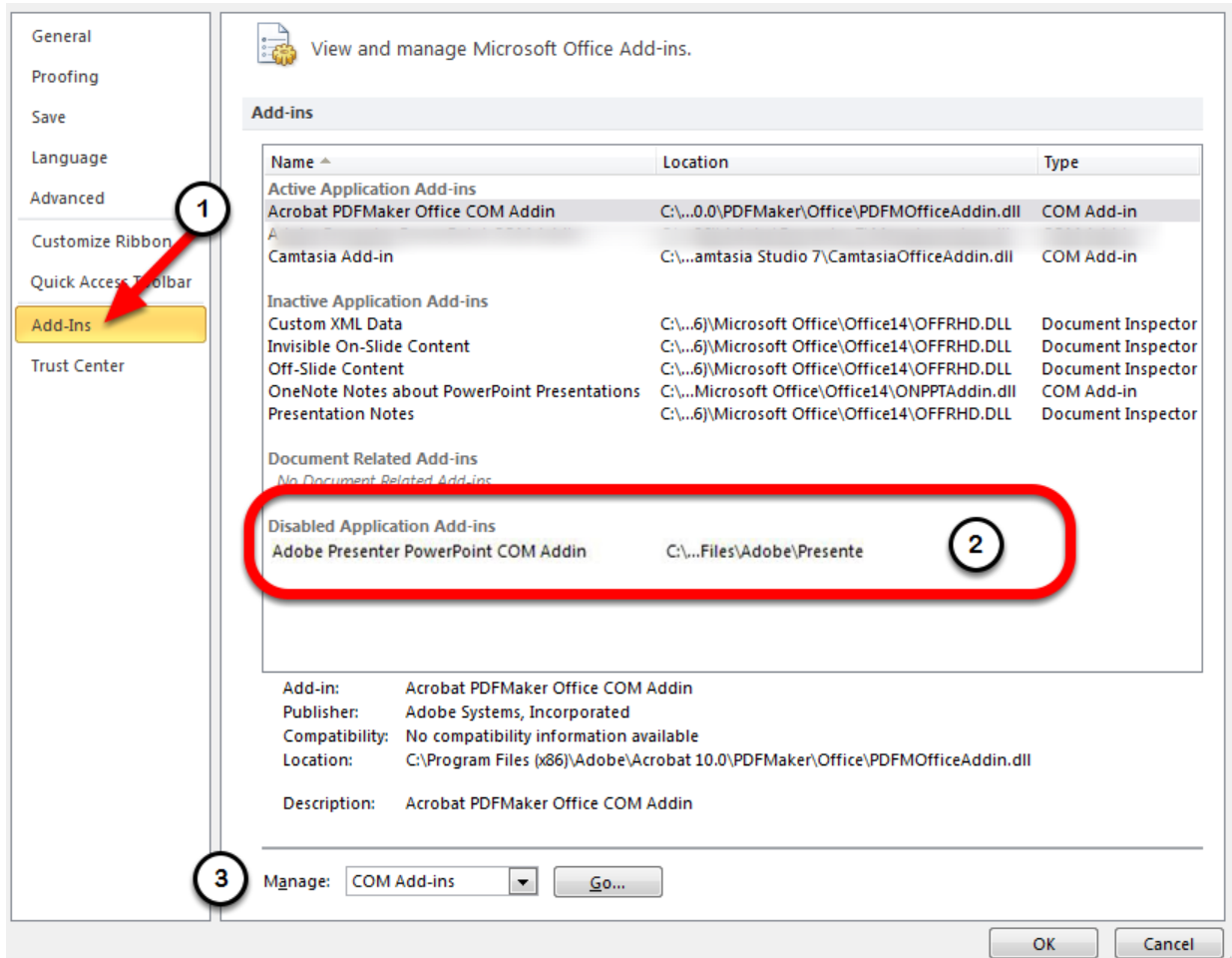
### Find the Options



The location of "Options" differs in Powerpoint 2007 and 2010.

- **Office 2010** (on the left) - go to the File menu (1) and find options (2)
- **Office 2007** (on the right) - Go to the "Office" button (3) then find Powerpoint Options (4) at the bottom of the menu

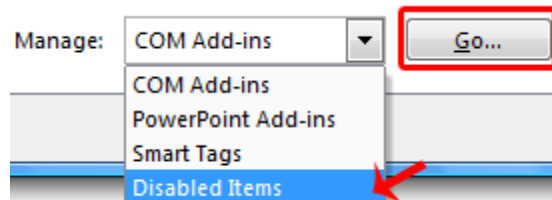
## Find Add-Ins within the Options



Once you've opened options:

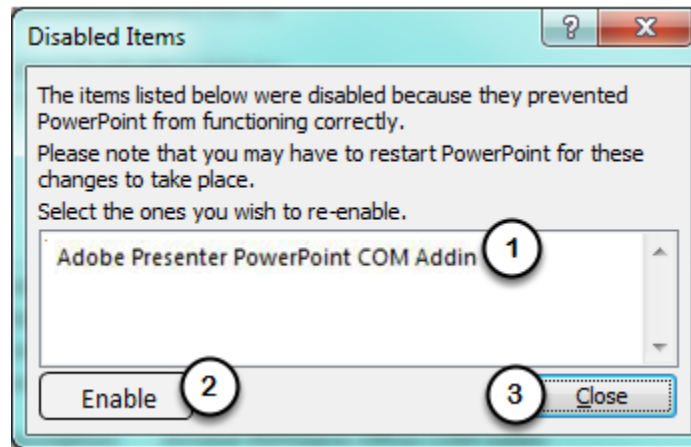
- Choose Add-Ins (1)
- You should find Adobe Presenter PowerPoint COMAddin listed under Disabled Application Add-ins (2)
- Down at the bottom look for the Manage menu (3)

## Manage Disabled Add-Ins



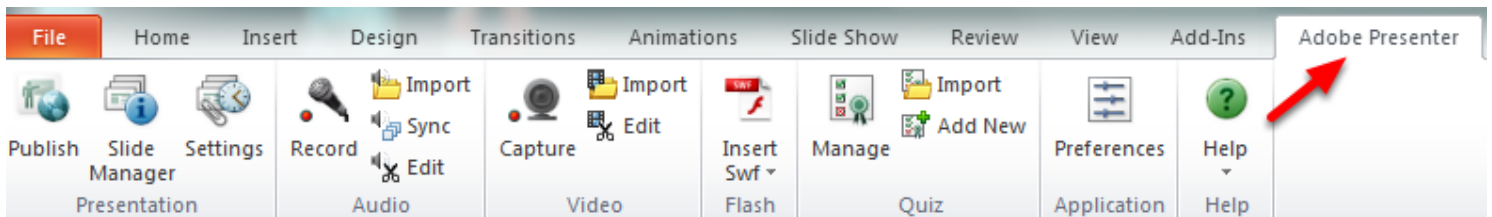
The Manage menu is near the bottom of the screen - Change the selection to "Disabled Items" and click "Go" .

## Enable the Adobe Presenter Add-In



- (1) Select the Adobe Presenter Add-In by clicking on it
- (2) Click Enable
- (3) Click Close

## Re-Start Powerpoint



- Click OK to exit the Options
- You may need to re-start PowerPoint, but the Adobe Presenter Ribbon (menu) should be there now.