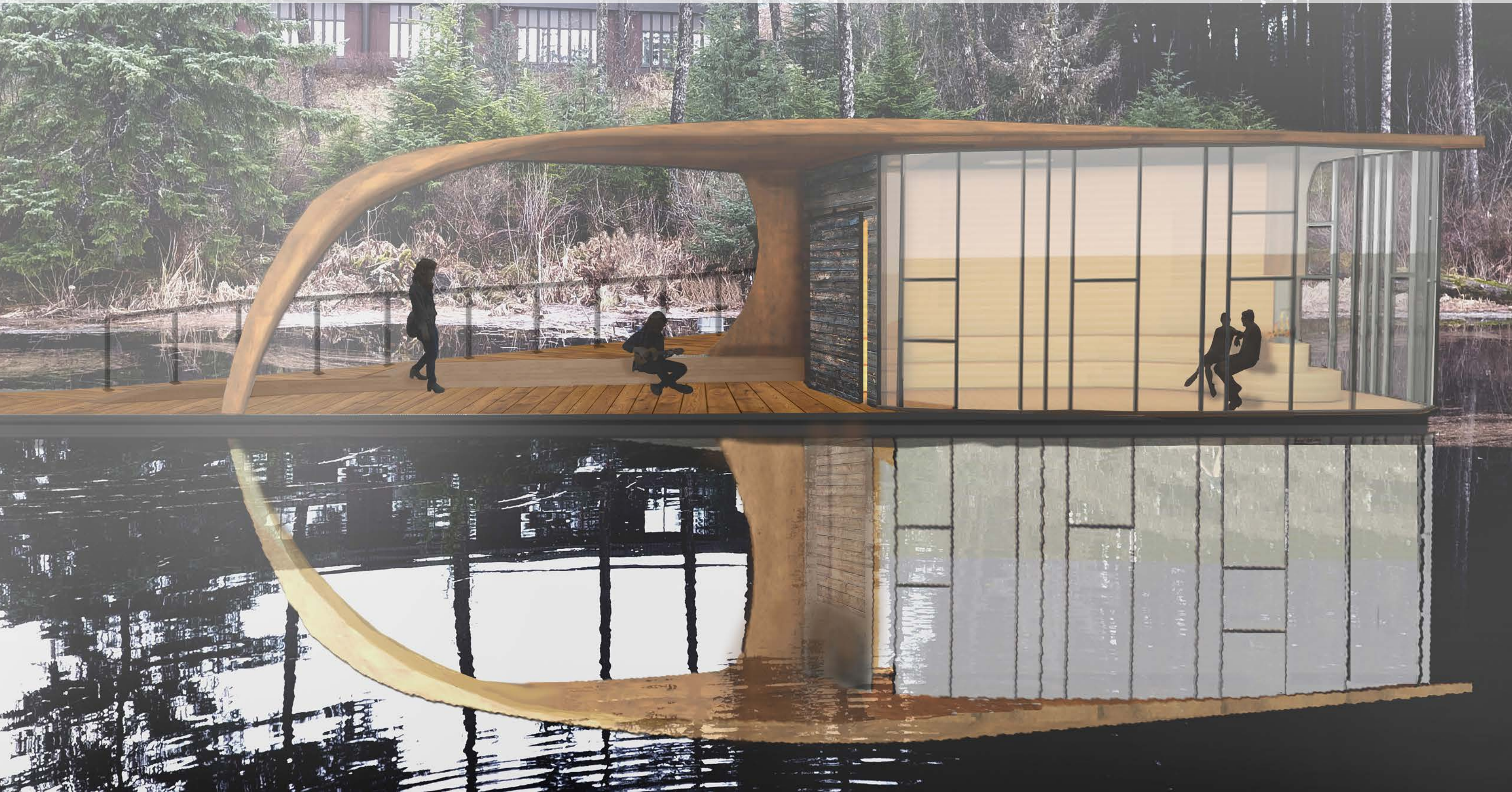
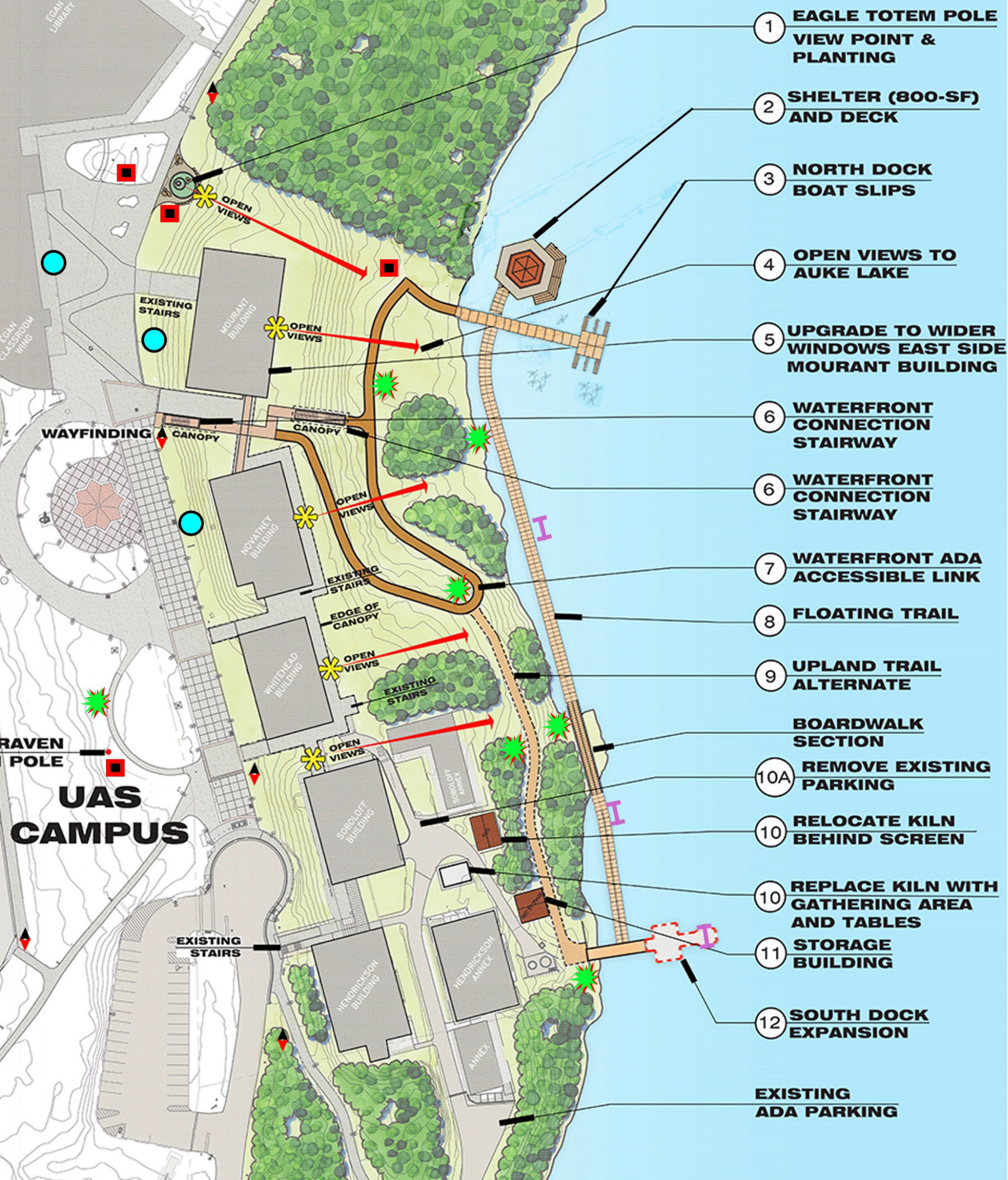


Shoreline Improvement Project





Univeristy of Alaska Southeast Aak'w Shoreline Master Plan

- Shelter and Deck

800 SF fully enclosed and heated classroom, deck for lake viewing, large enough for a group of 15-20 students to occupy

- Floating Trail

A floating trail with modular floats

- Waterfront Connection Stairway

A direct route for access to lakefront from the campus core to Auke Lake.

- Waterfront ADA Accessible Link

A new route from the Campus to the lakefront meeting the requirements of Americans with Disabilities Act.



Site Information

- Wetland Delineation Report

Two levels of investigation were conducted for the analysis of the wetlands in the UAS study area: a review of existing information and a formal on-site delineation.

- Topographic Survey

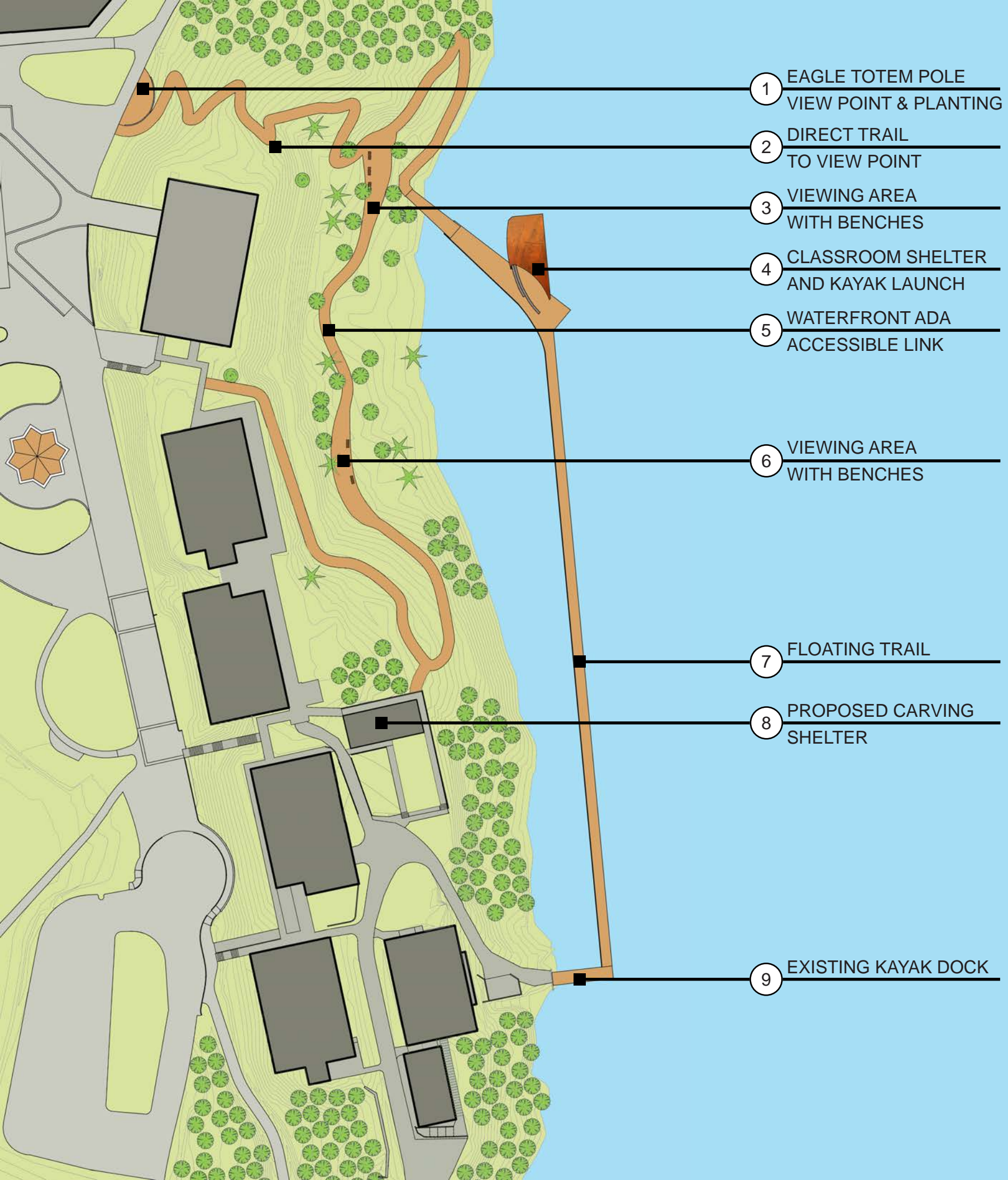
An accurate survey was conducted to identify the existing grade of the site.

- Bathymetric Survey

An accurate survey was conducted to identify the existing depth of the lake.

- Pre-application Meeting with US Army Corps of Engineers

Consensus at the meeting was clear that a low impact access trail, floating dock and floating shelter would be preferable for minimal impact to the wetlands.



Proposed Site Plan

- More Direct Trail to Shelter

Direct trail down hill will shorten travel time to trail network at lake shoreline

- Shelter

675 SF shelter consisting of a classroom with seating for 15-20 students, ADA restroom and mechanical room. Outdoor gathering space and deck add additional connection to lake.

- Floating Trail

Unobstructed views of the lake and mountains beyond from the water's edge

- ADA Trail with Viewing Areas

Accessible trail with viewpoints for rest with view of the lake

- Floating Trail connects with Existing Dock

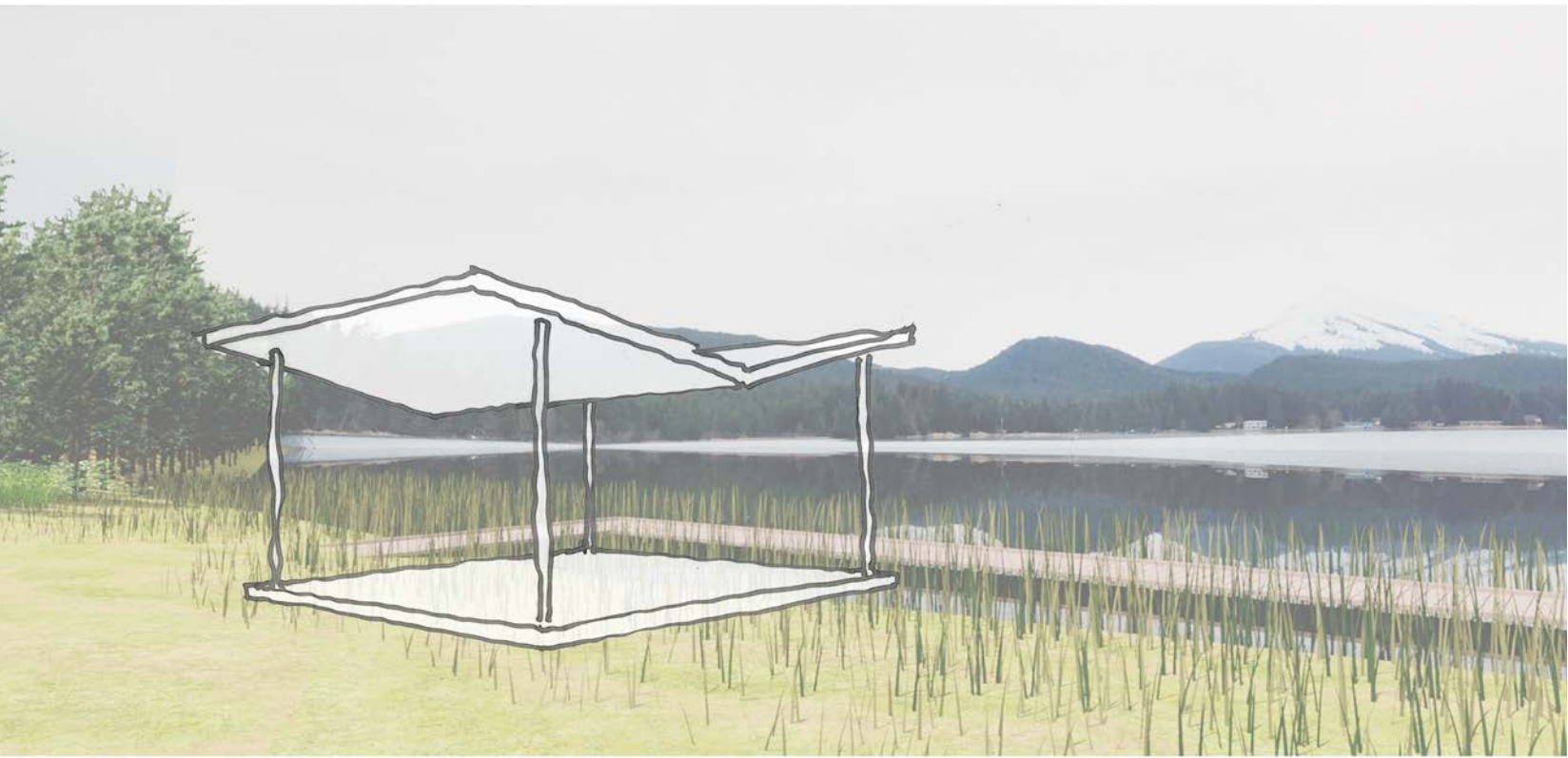
Creates access point from other end of campus to Shelter

Precedent Images

- Building relationship to landscape
- Sense of shelter



Early Process Sketches of Form in Landscape





CIRCA LATE NINETEENTH CENTURY

TLINGIT TRIBES, CLANS AND CLAN HOUSES

"...a name once given (to a clan house) survive(s) the mere structure." George Emmons, 1916

Meetings with Tlingit Elders

Several meetings with elders resulted in great visualizations of stories.

Áak'w du shaá (Lady of the lake) story stood out, elder spoke of her hair flowing out into the water, and her underwater lake home is a reflection of home above water.



Process sketches with Northwind and Wooch.éen Student Group

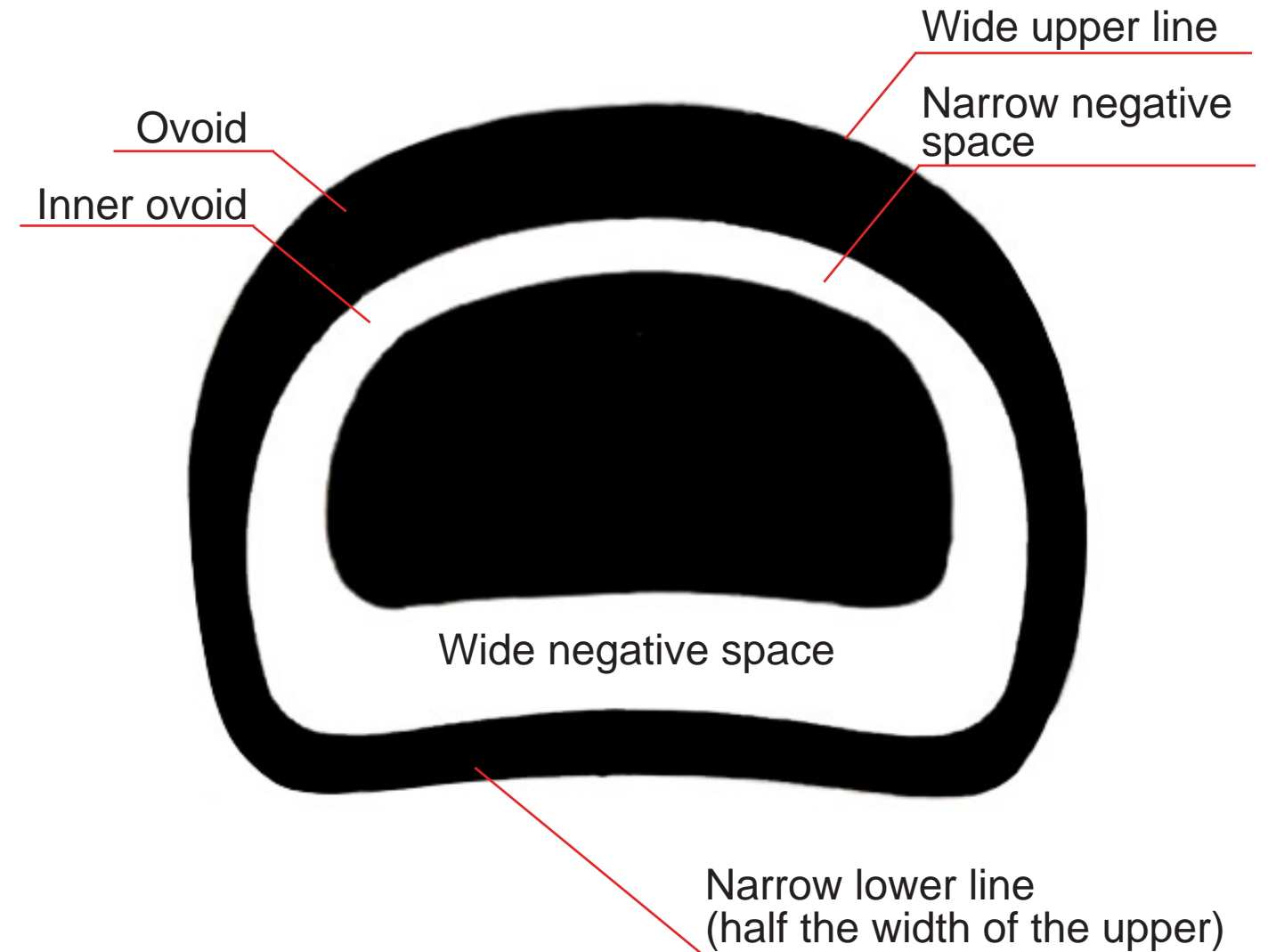
Sketches involved:

- S'eik daakahídi: Smoke House
- Gunakadeit: Sea Monsters
- Gees'óok: Northern lights
- Hít: House
- Át yahaayí: Reflection
- Áak'w: Little Lake
- Áak'w yaax: Around Áak'w, shoreline
- Gathéen: Sockeye Creek aka Auke Creek

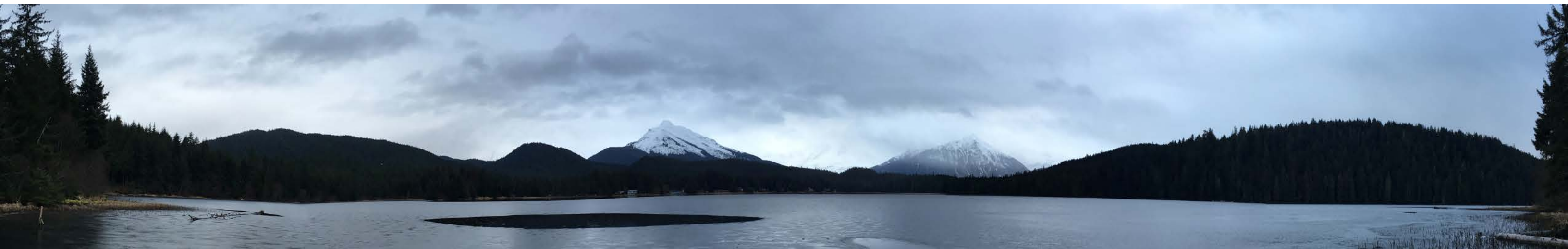
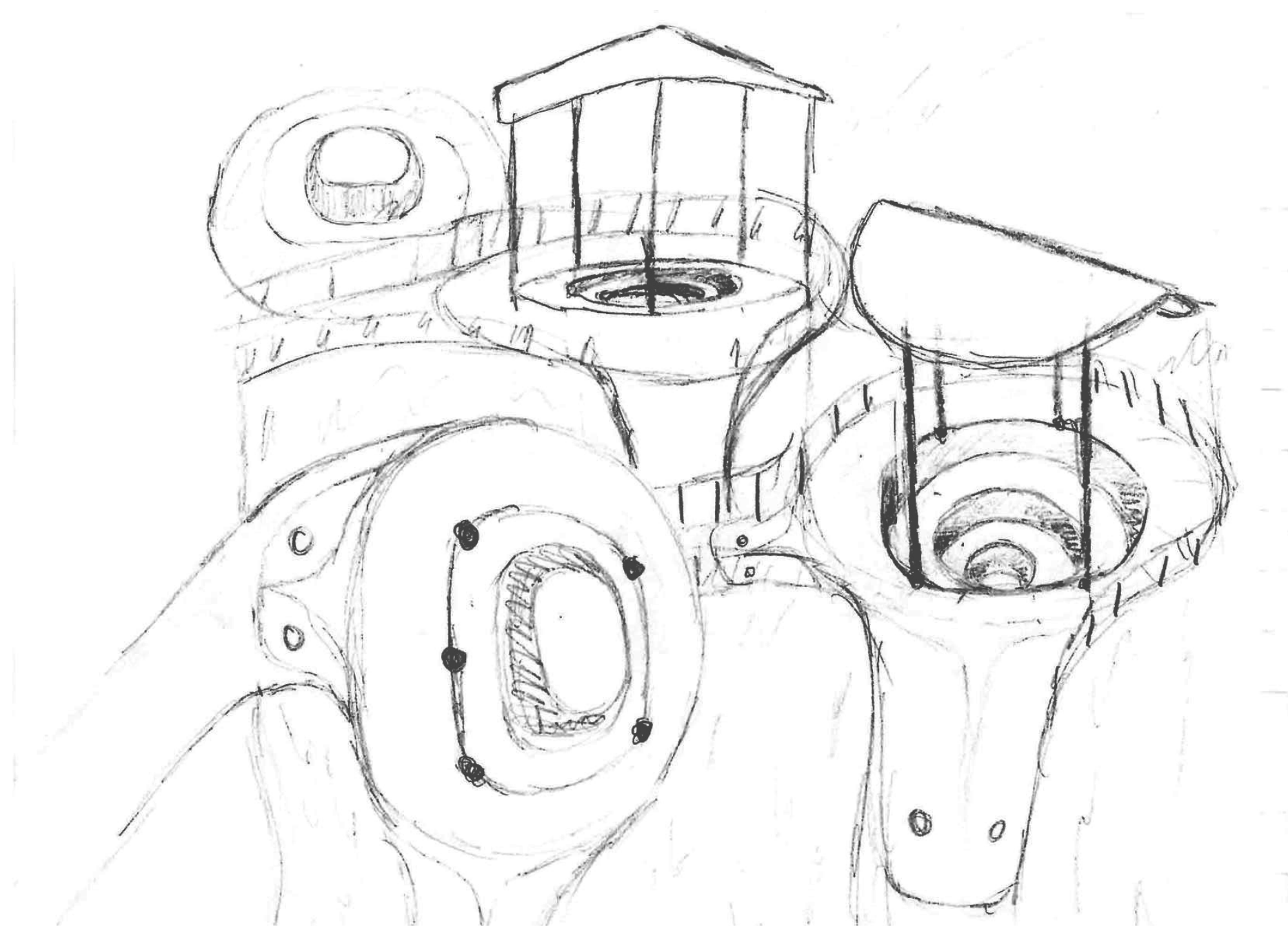


Study of Formline

- Ovoids fundamental for formline
- Different elements of the art style are built off of a base ovoid shape
- Proportions
- Can we use formline proportions to create a place of gathering?

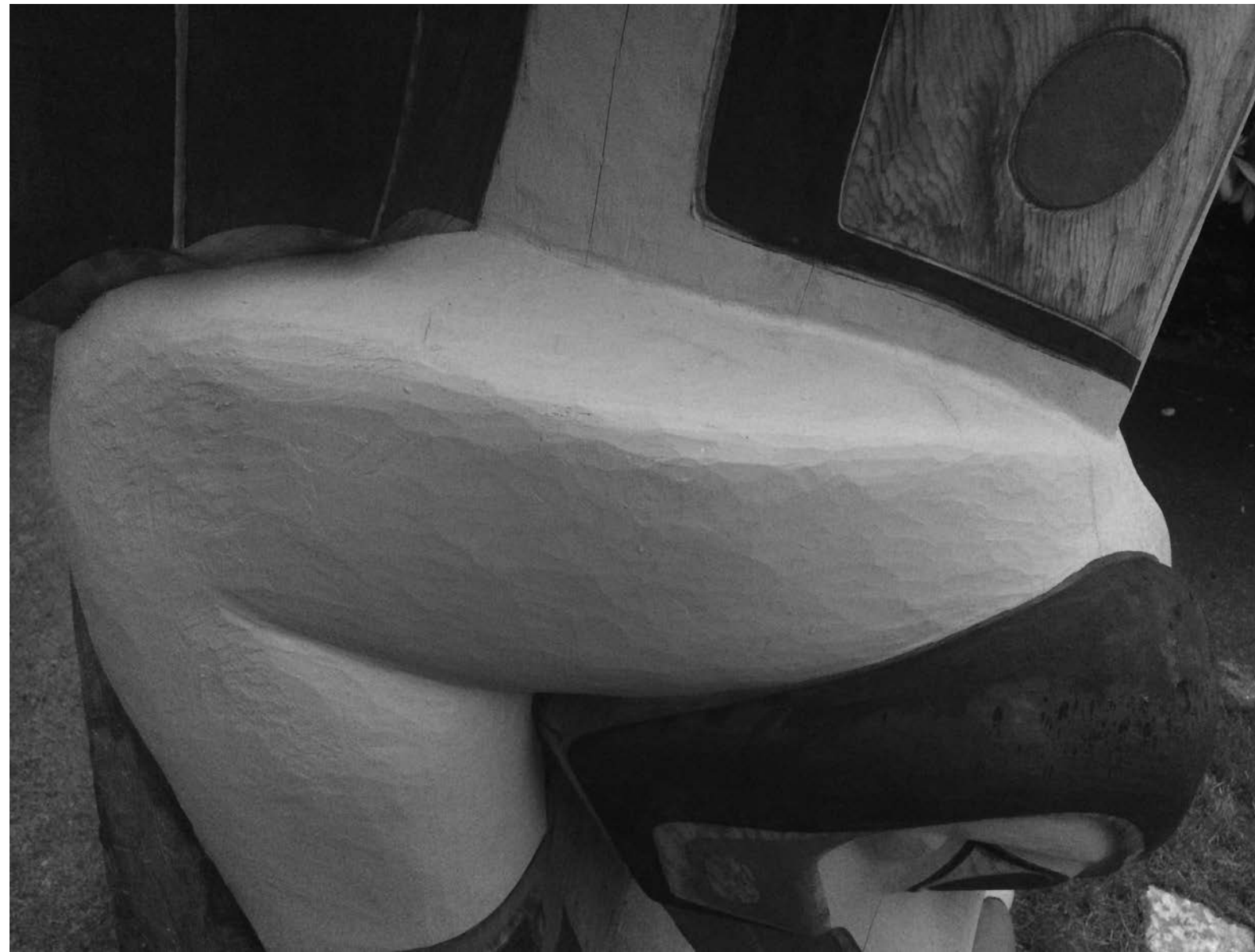


Process Sketches

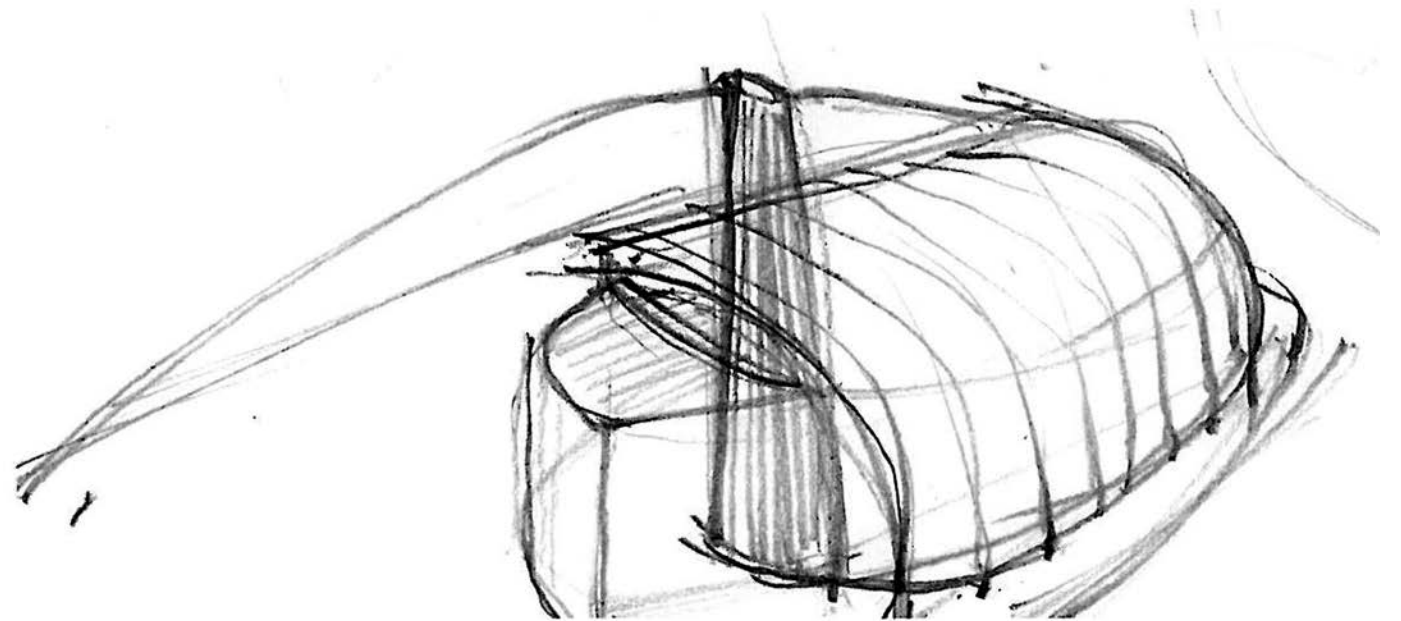
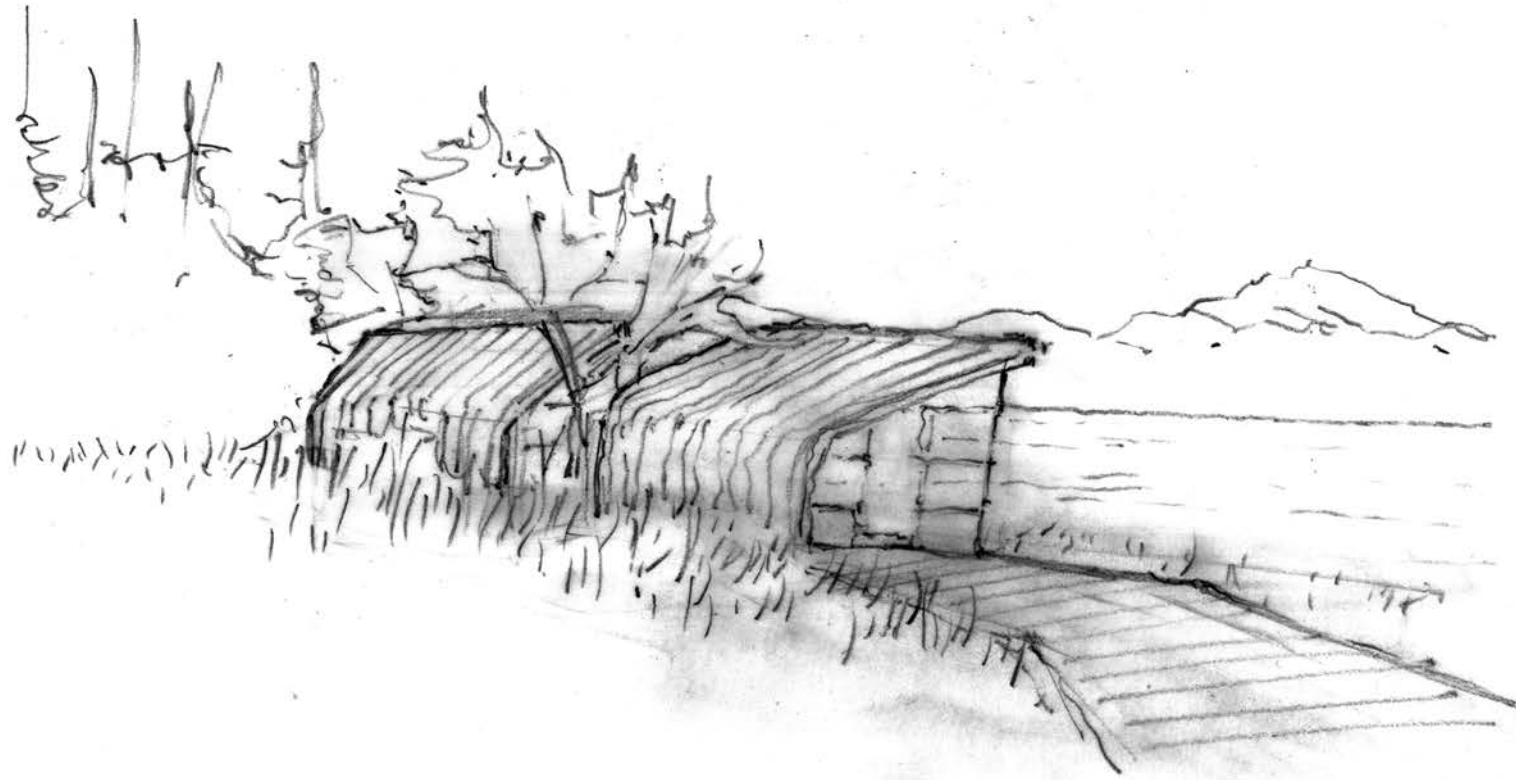
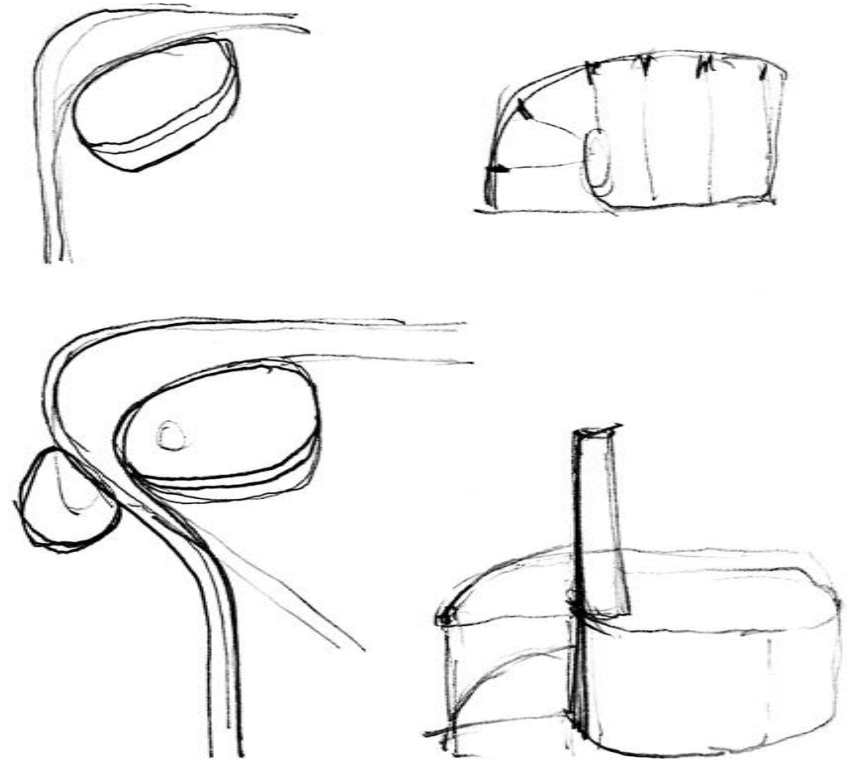
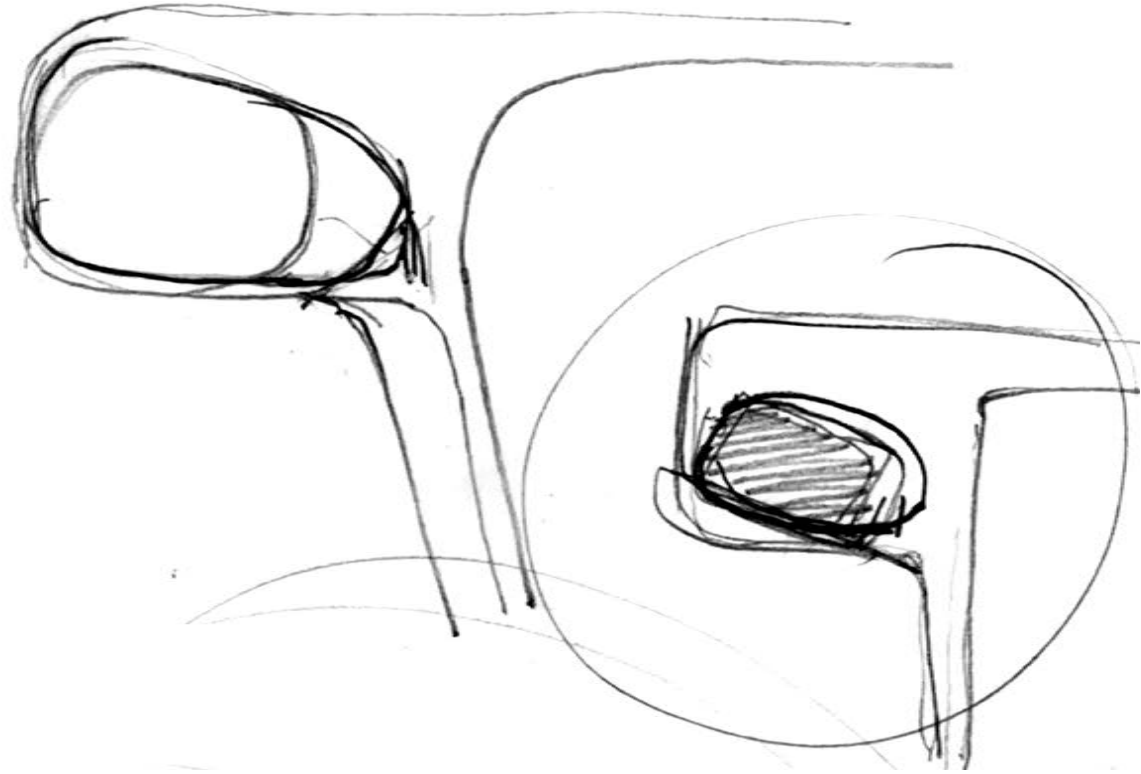
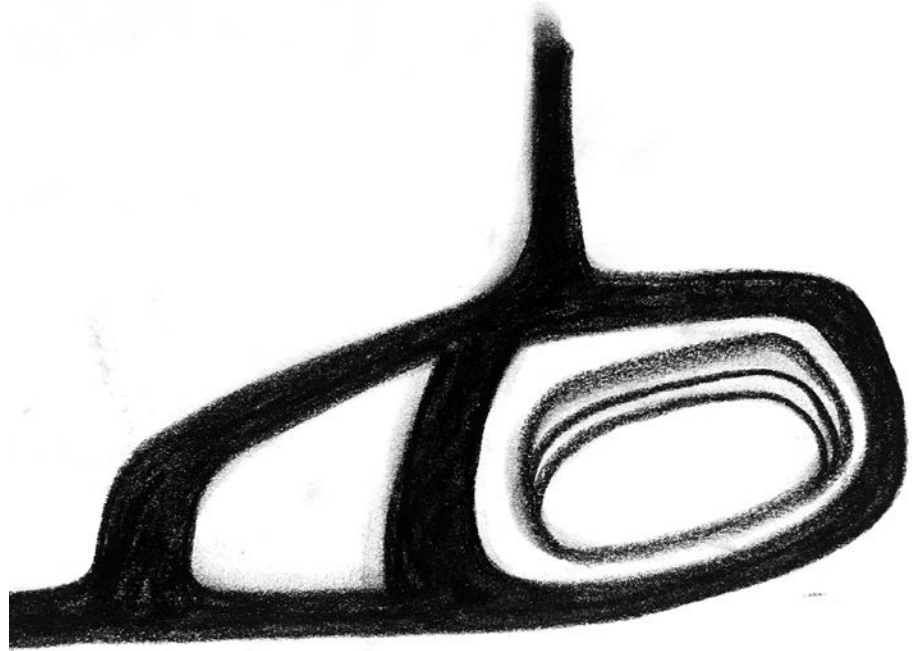


Study of Formline in 3 Dimensions

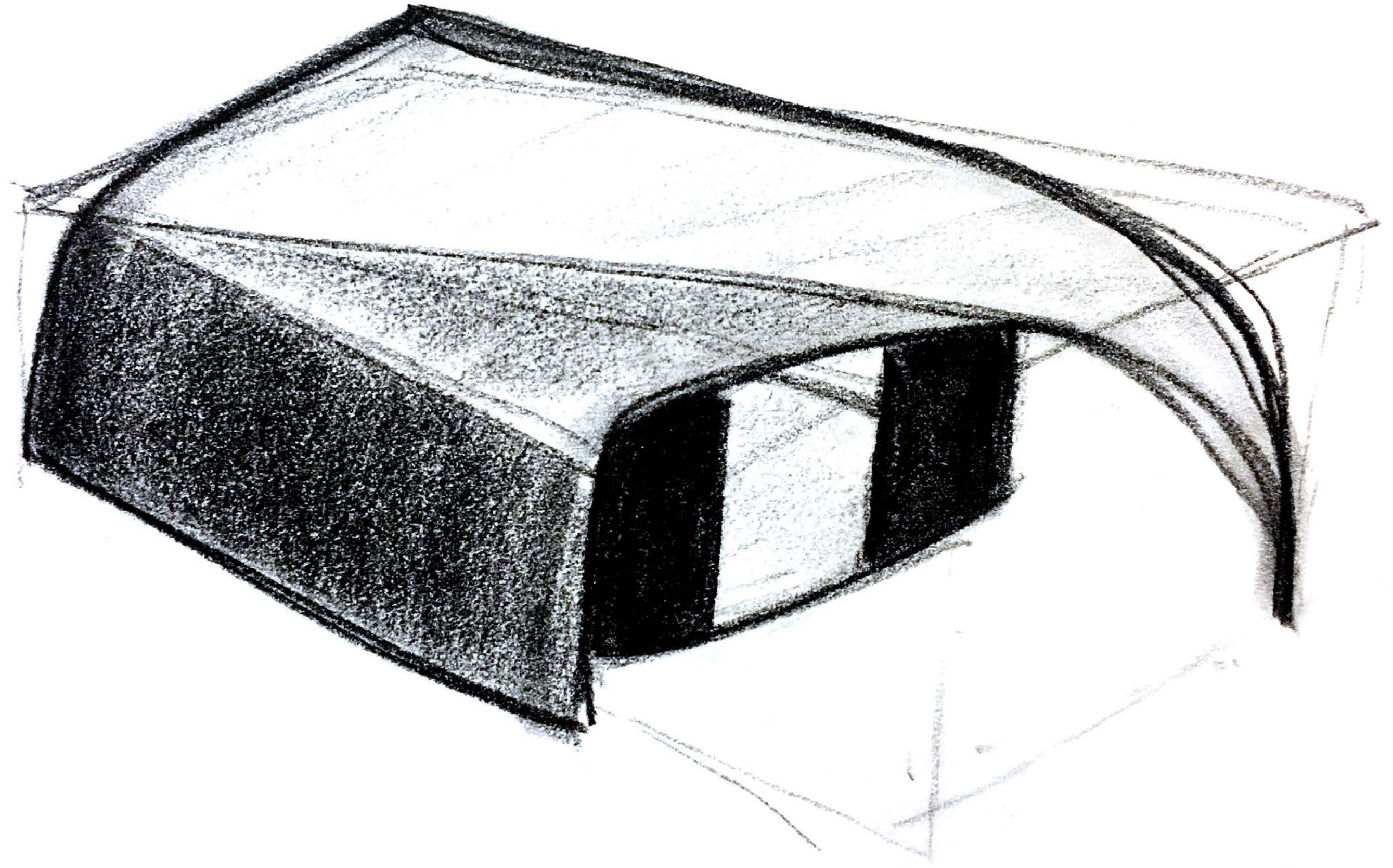
- In carving, formline is used to create 3 dimensional shapes
- Can we use similar methods to create architectural space?

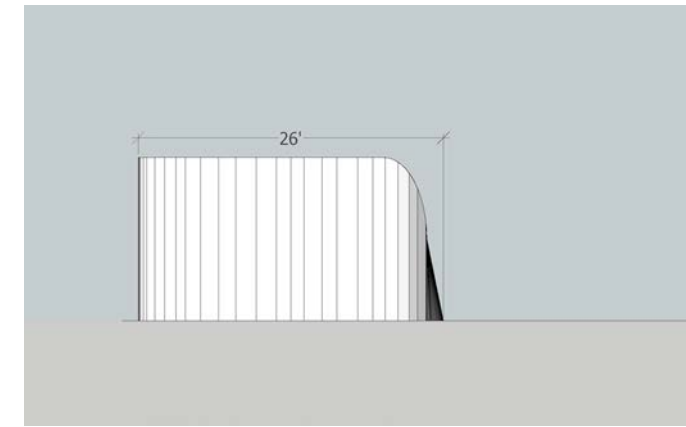
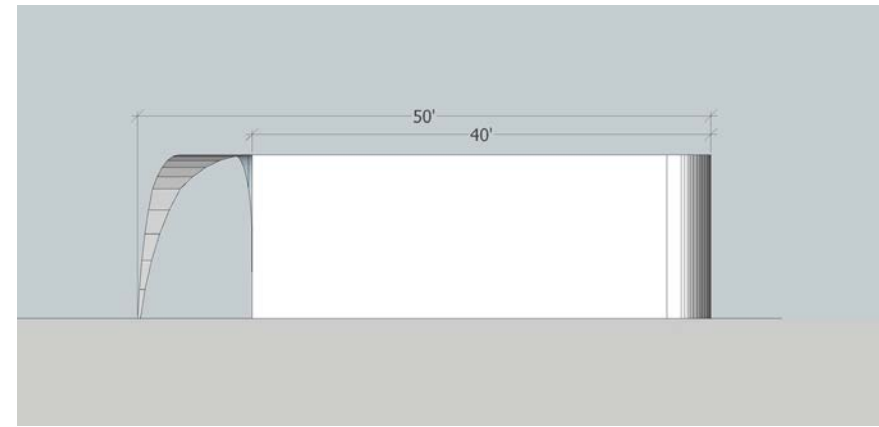
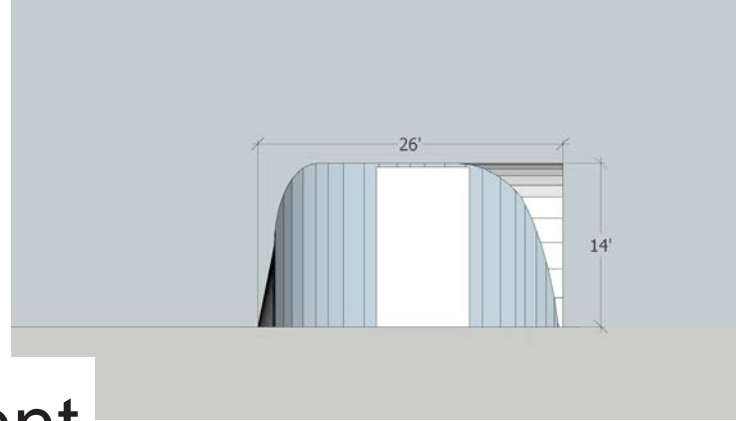
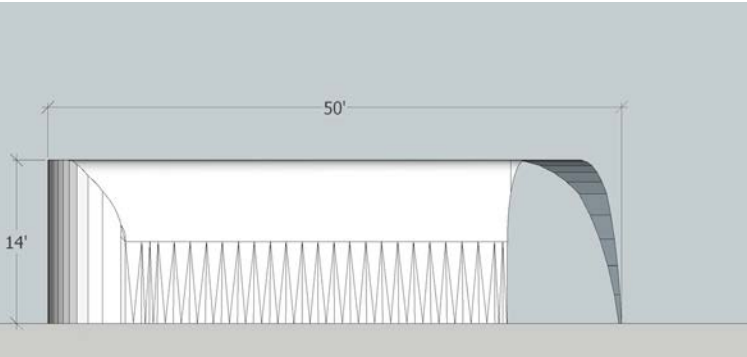


Process Sketches

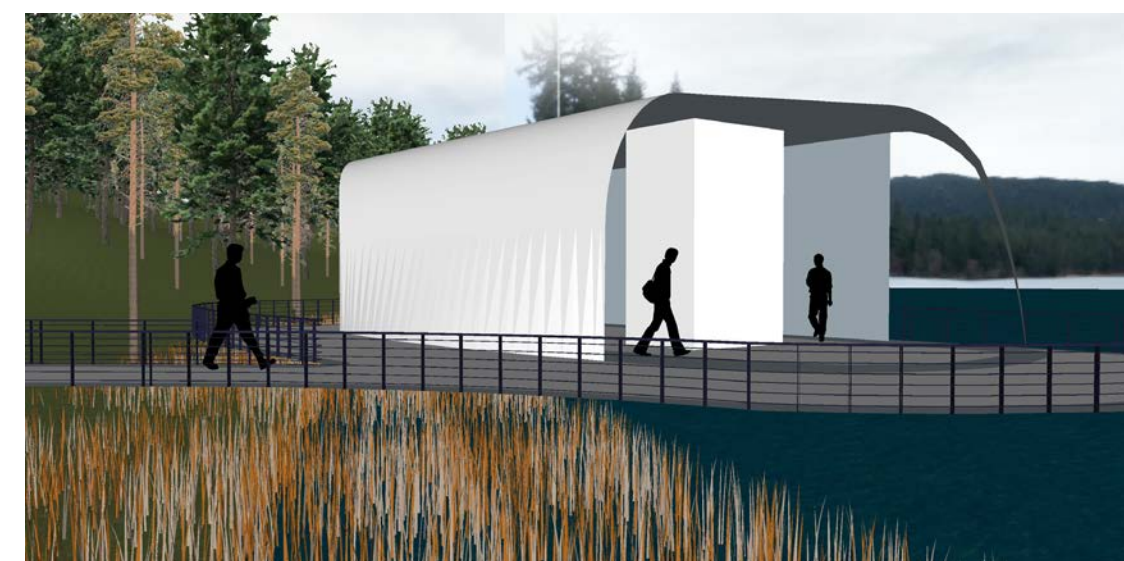
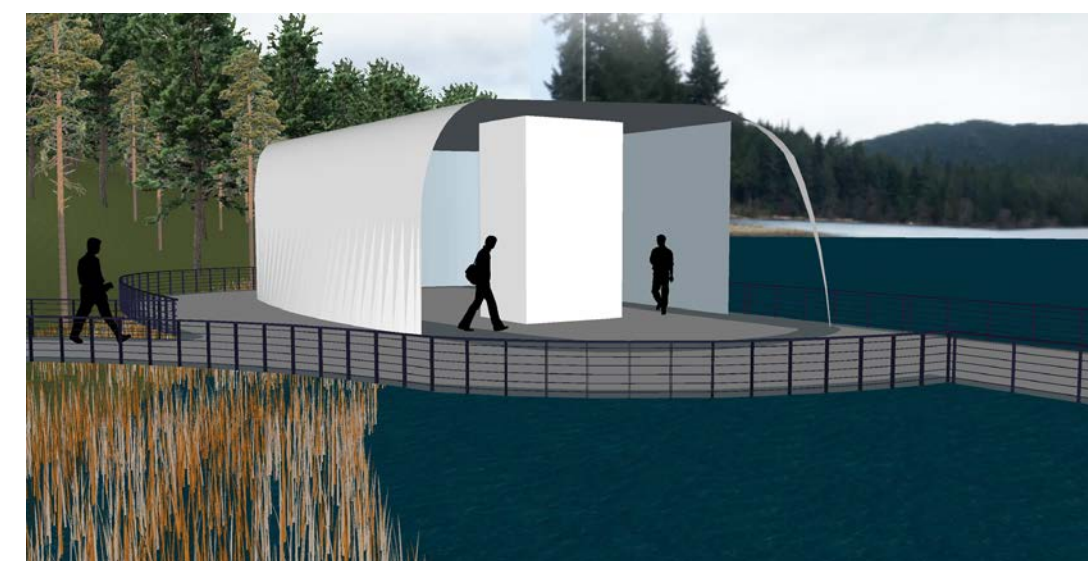
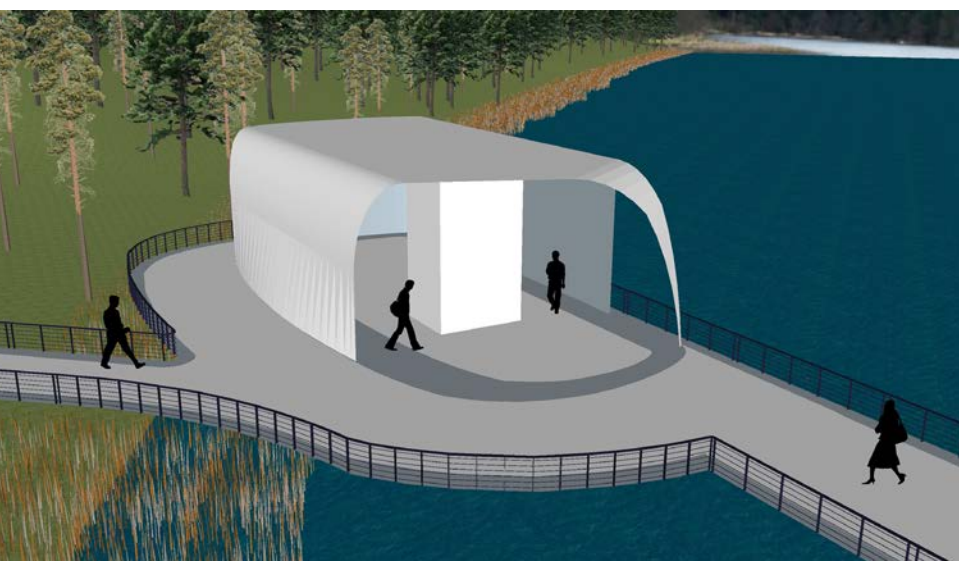
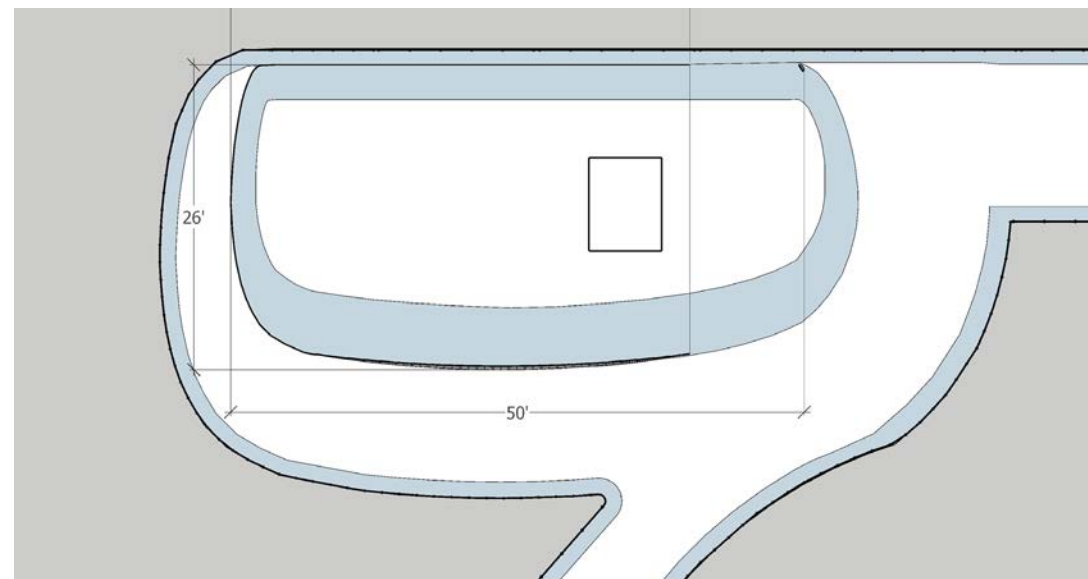
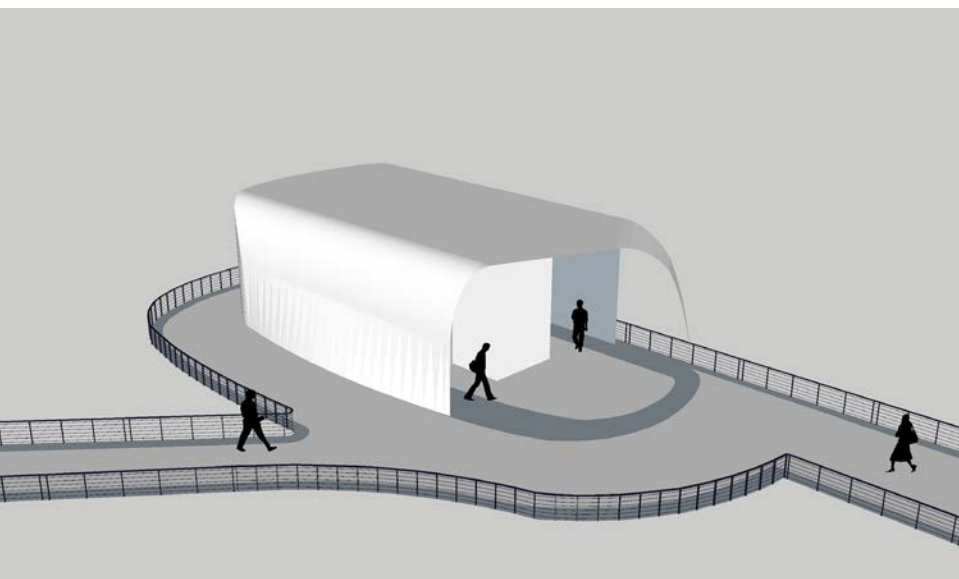
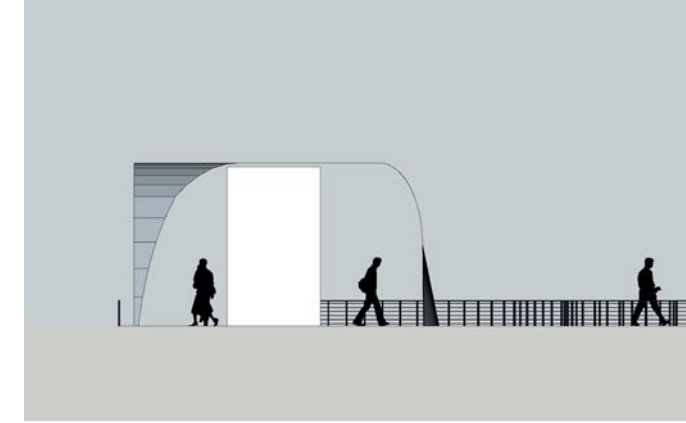
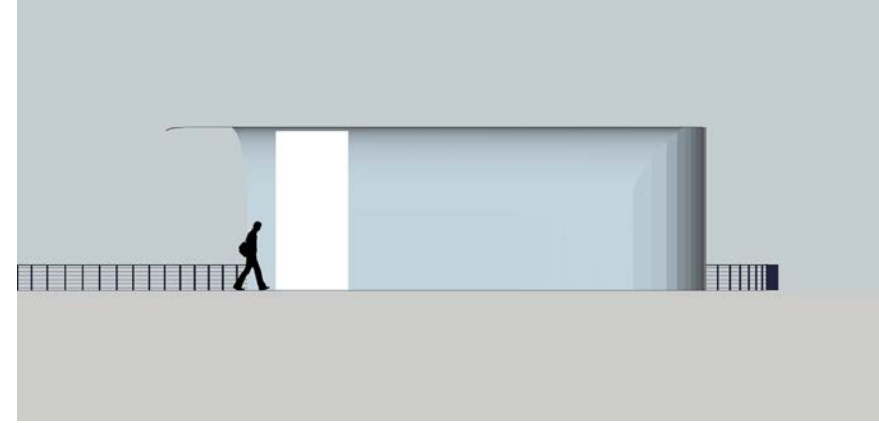
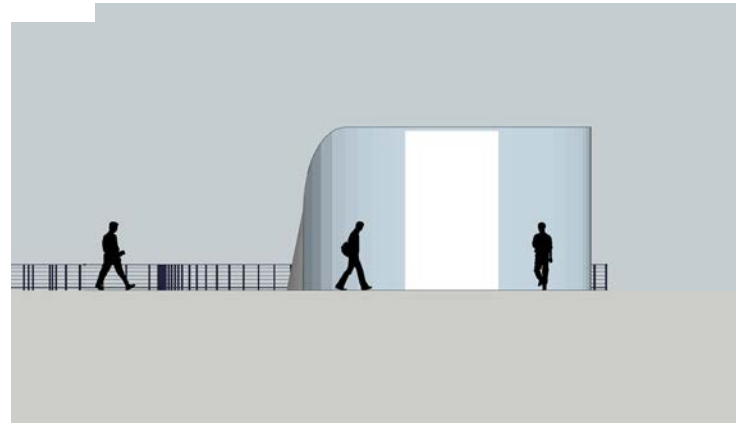
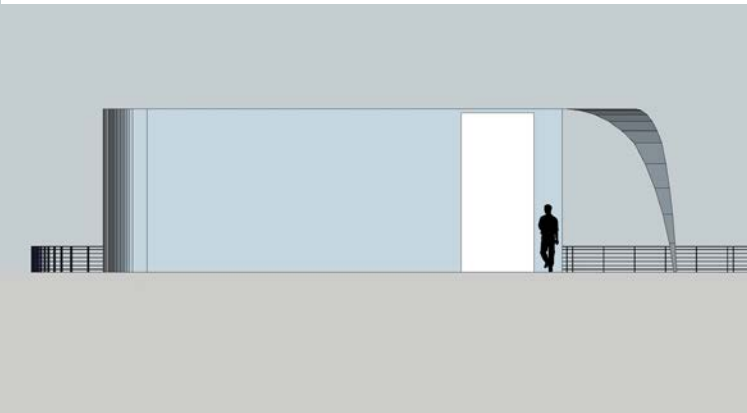


Process Sketch

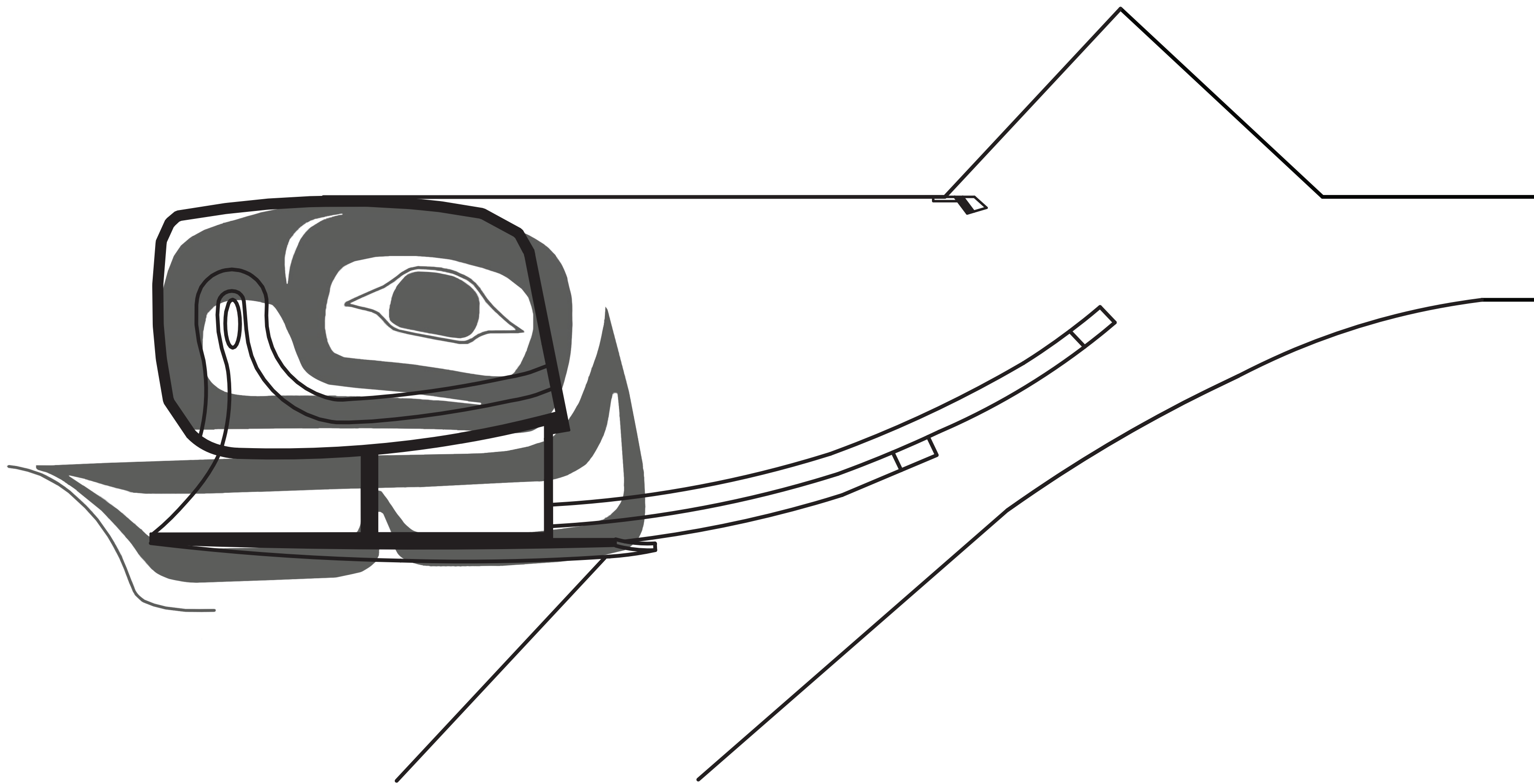




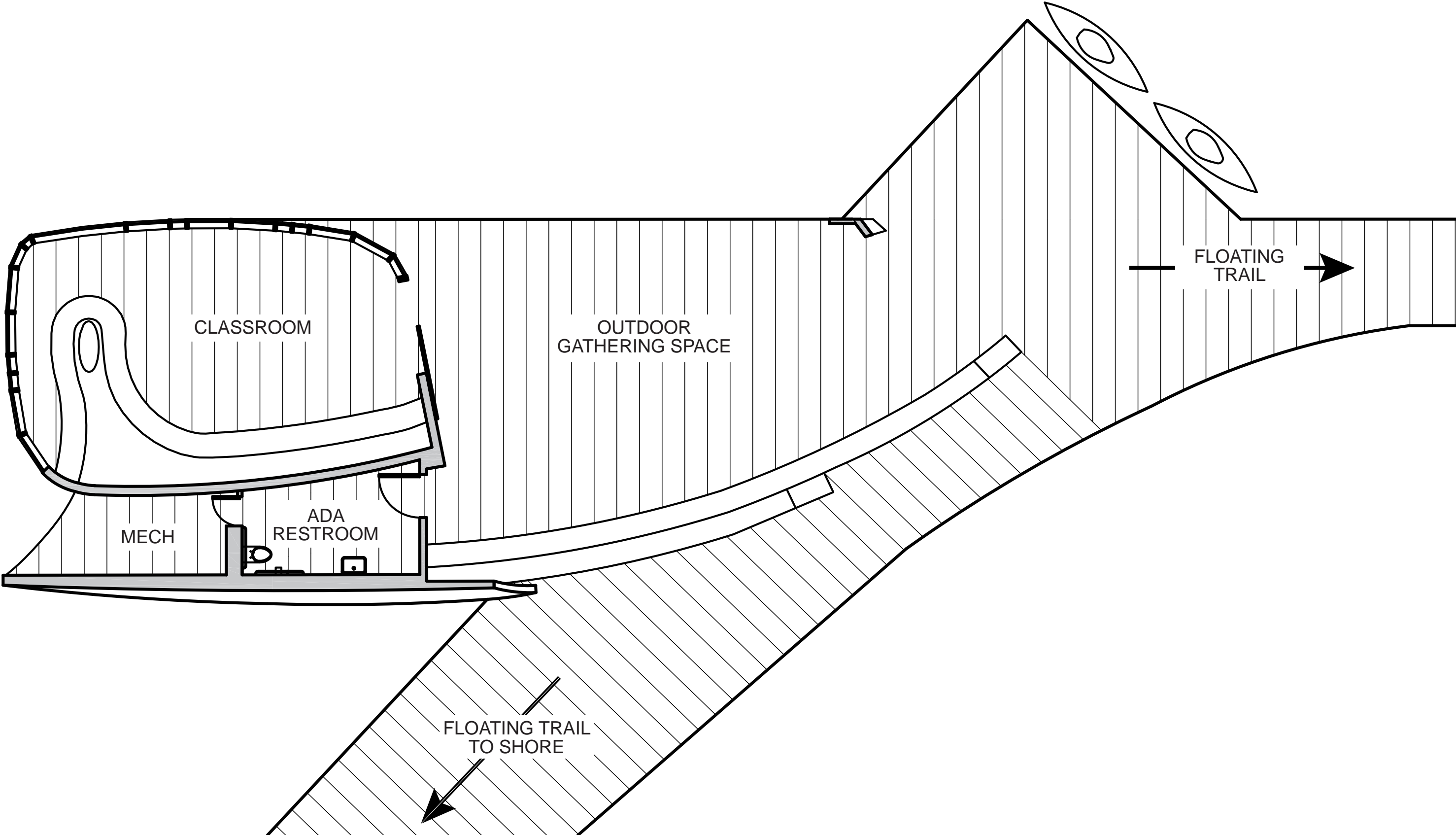
Concept Development

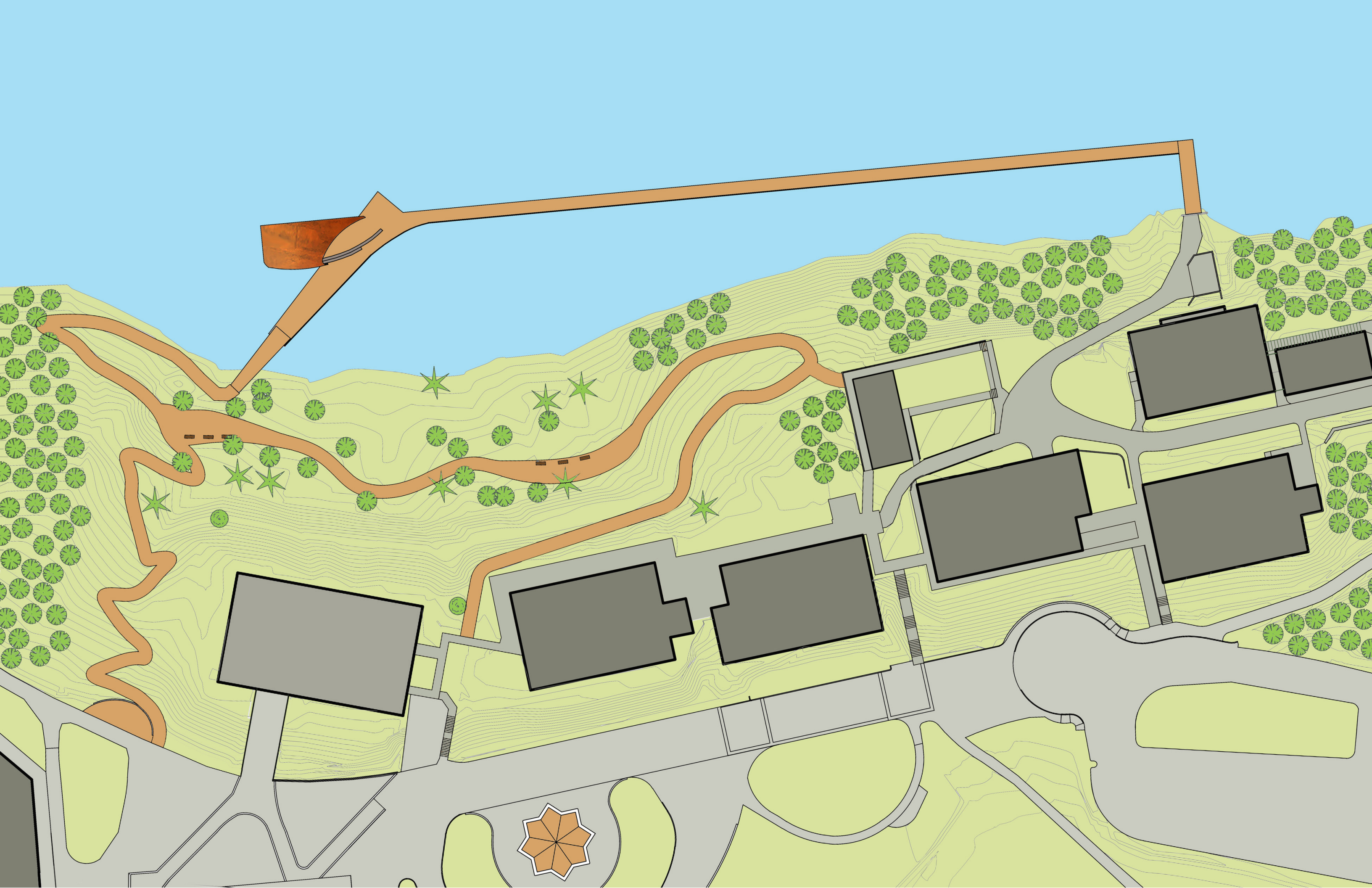


Floorplan Diagram



Floorplan





View from Shoreline

