



UNIVERSITY of ALASKA SOUTHEAST

School of Arts and Sciences

ALL-SCHOOL MEETING, CONVOCATION 2017

INTERIM DEAN PAULA J.S. MARTIN, PH.D.

Introductions

THREE DEPARTMENTS, NOW FOUR

*WELCOME TO THE NEW BUSINESS AND PUBLIC
ADMINISTRATION DEPARTMENT*



UNIVERSITY of ALASKA SOUTHEAST

My Priorities for the Year

Enrollment, Enrollment, Enrollment



My Priorities for the Year

Enrollment, Enrollment, Enrollment

Assessment of Program Student Learning Outcomes

High Impact Practices: Spreading the Word

Six Year Plan: review with special eye as advising tool

Transitions:

- Once three, now four departments
- FY18 Budget Reduction and Resulting staffing changes

Supporting smooth Grants and Contracts processes



Enrollment:

Let's look at where we stand

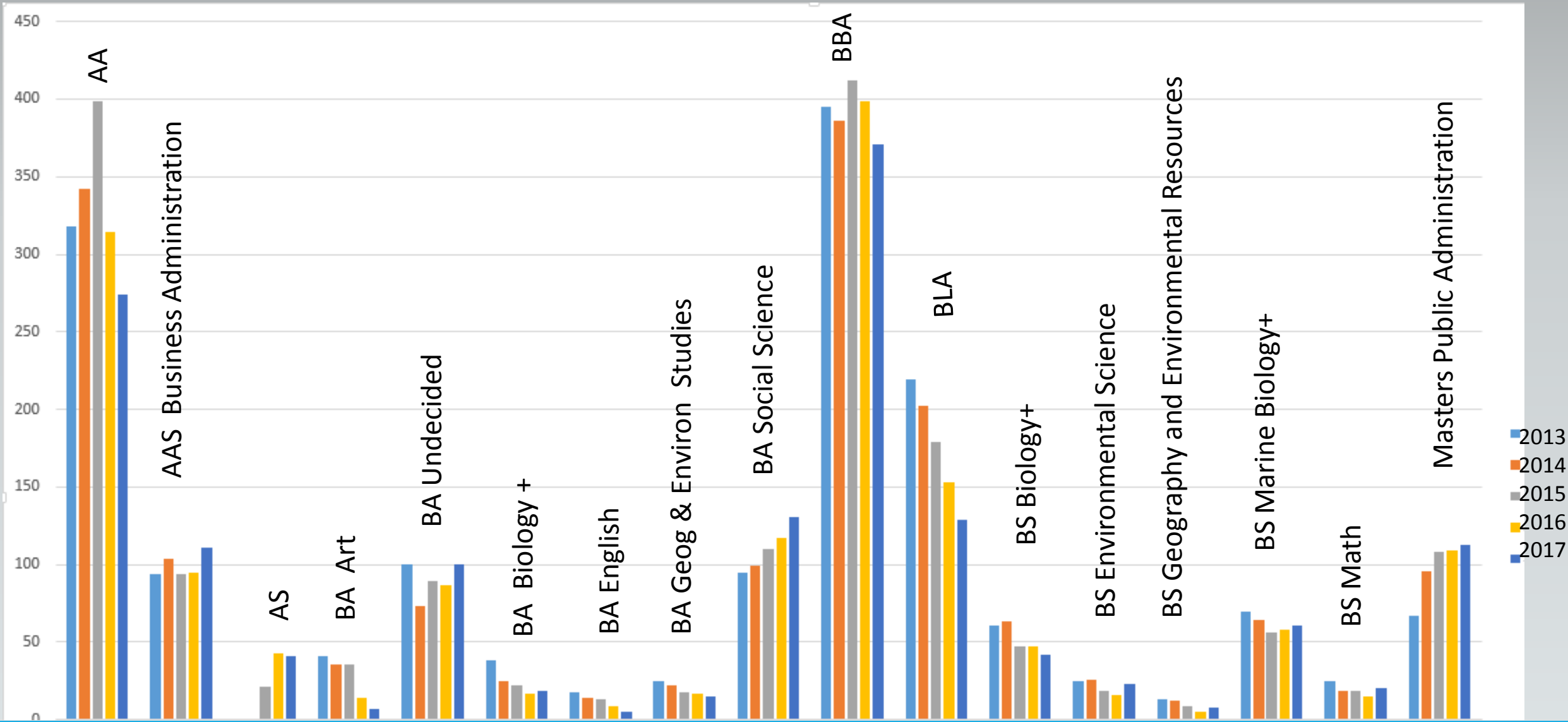
Fall 2017	Juneau	Ketchikan	Sitka	UAS	UAA	UAF	UA
Headcount	1,324	488	600	1,950	13,527	5,975	20,823
SCH	10,132	2,500	3,132	15,764	137,169	59,112	212,045
Applications	-	-	-	871	6,147	3,910	10,928
Headcount, YoY %	-11%	-8%	-13%	-11%	-7%	-5%	-6%
Headcount vs 4-Yr Avg	-26%	-17%	-16%	-22%	-	-	-
SCH, YoY %	-10%	-7%	-9%	-9%	-5%	-5%	-5%
SCH vs 4-Yr Avg	-24%	-15%	-12%	-21%	-	-	-
Apps., YoY %	-	-	-	+2%	-5%	-4%	-4%

UAS Fall Enrollment by School	Course Enrollment (YoY)	Enrolled Majors (YoY)
School of Art & Sciences	-16%	-7%
School of Management	-14%	-7%
School of Career Education	-15%	+3%
School of Education	-5%	-7%
Non-Degree Seeking	-	-23%

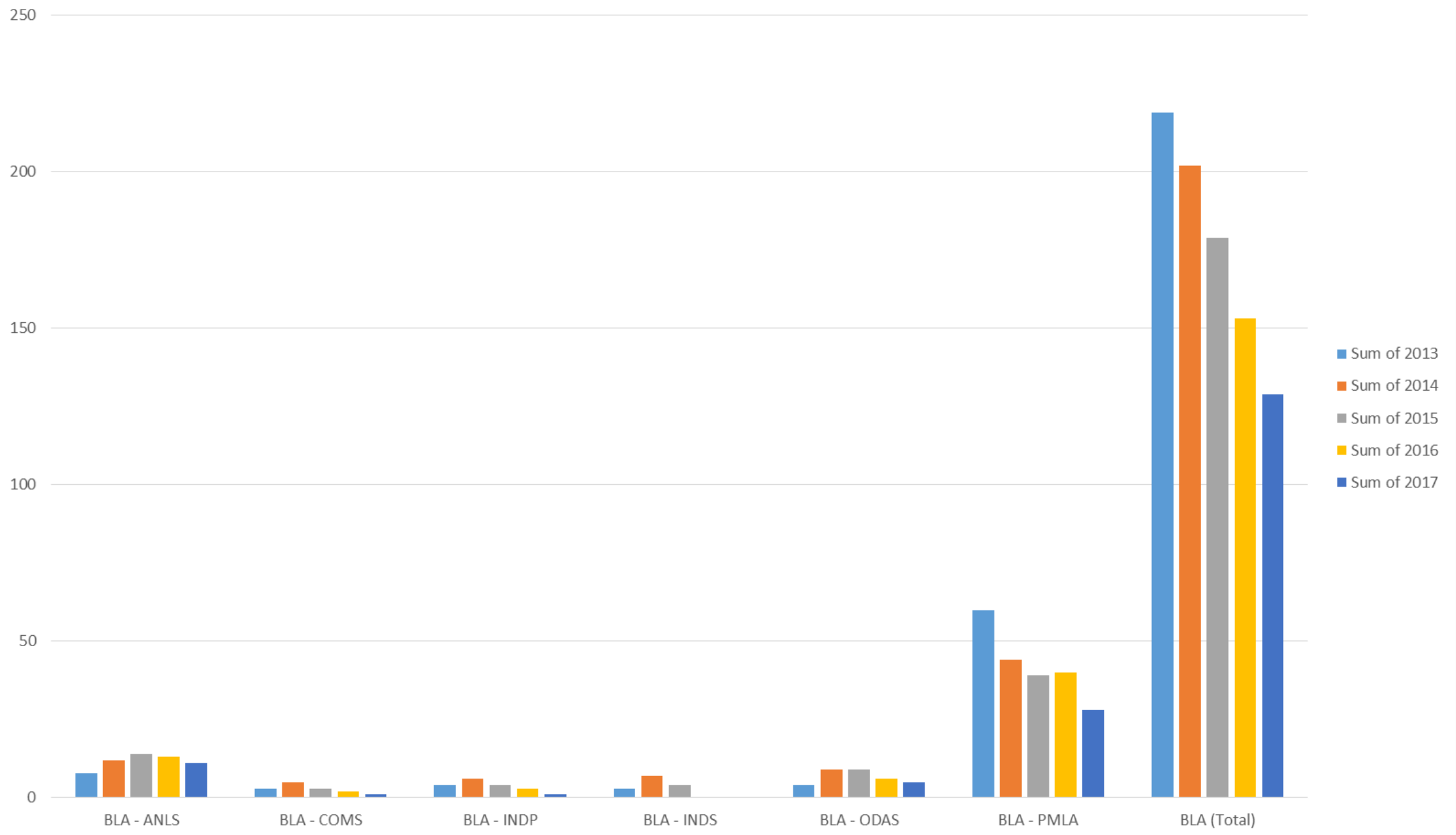
Enrollment: Program Perspective



Drilling down, next slides illustrate the five year changes in number of majors in each program (not including OEC or Certificates) for Arts and Sciences

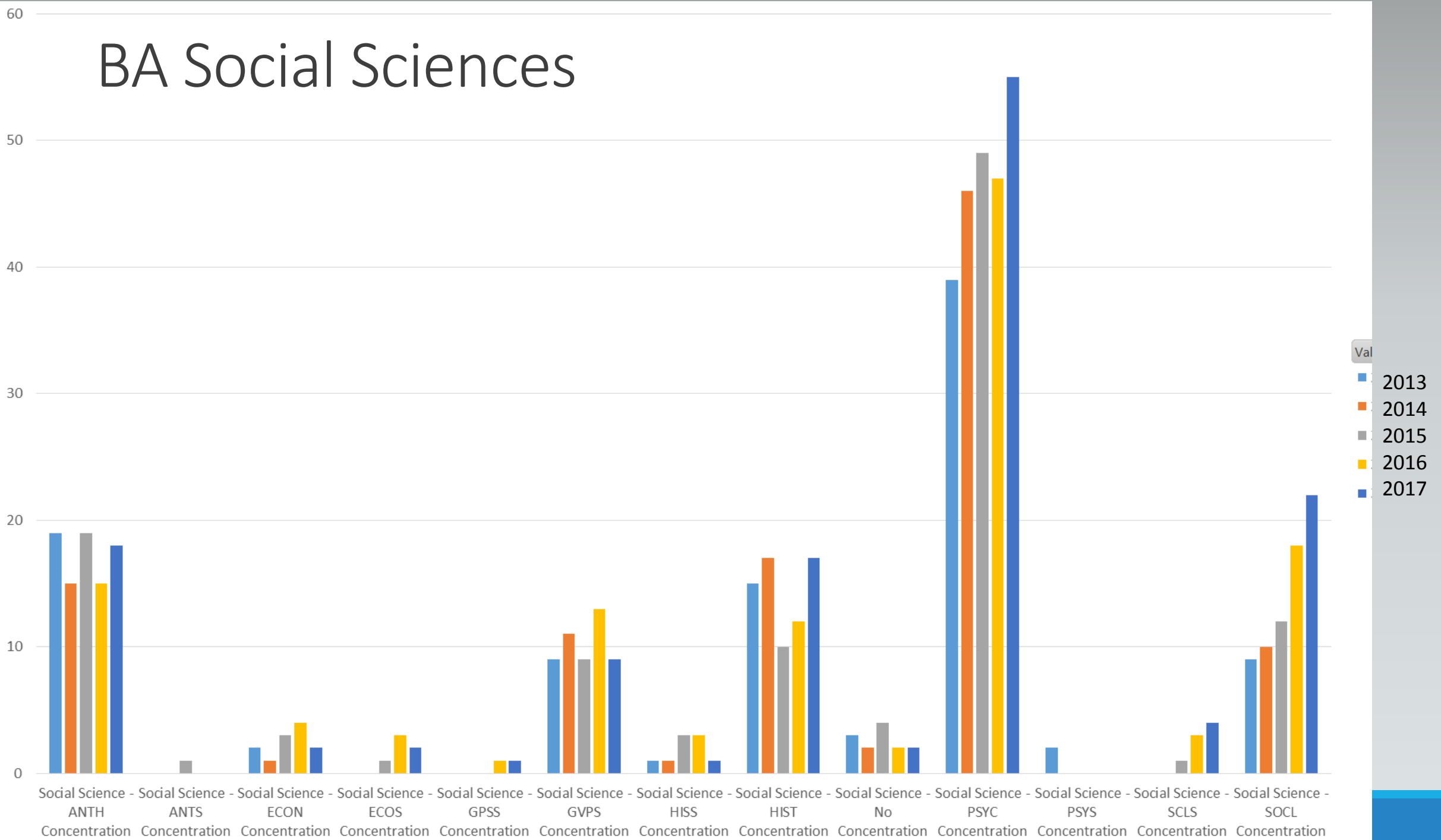


Number of UAS Arts and Sciences Majors (primary and secondary), 2013-2017,

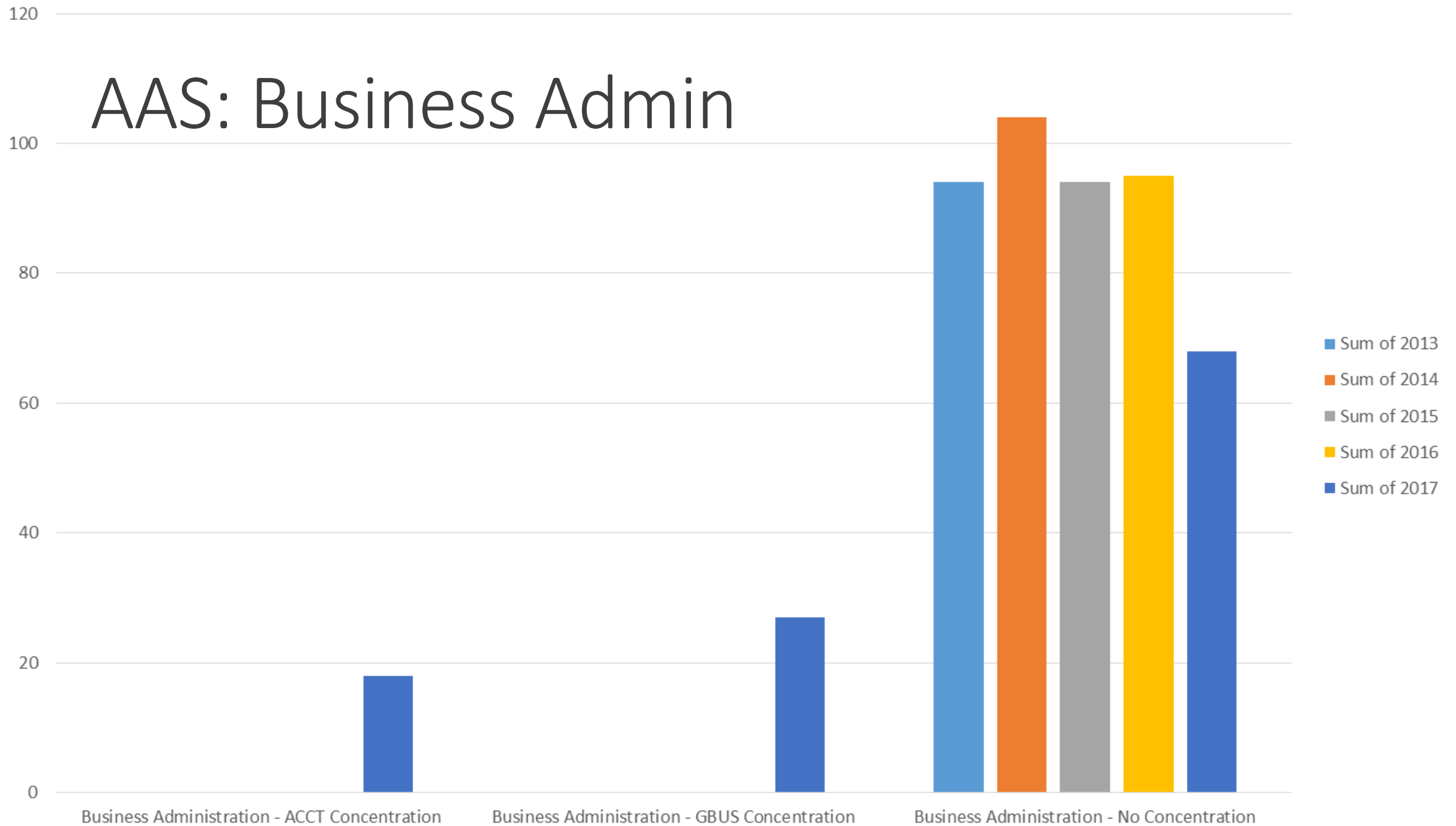


Number of Majors: BLA and concentrations

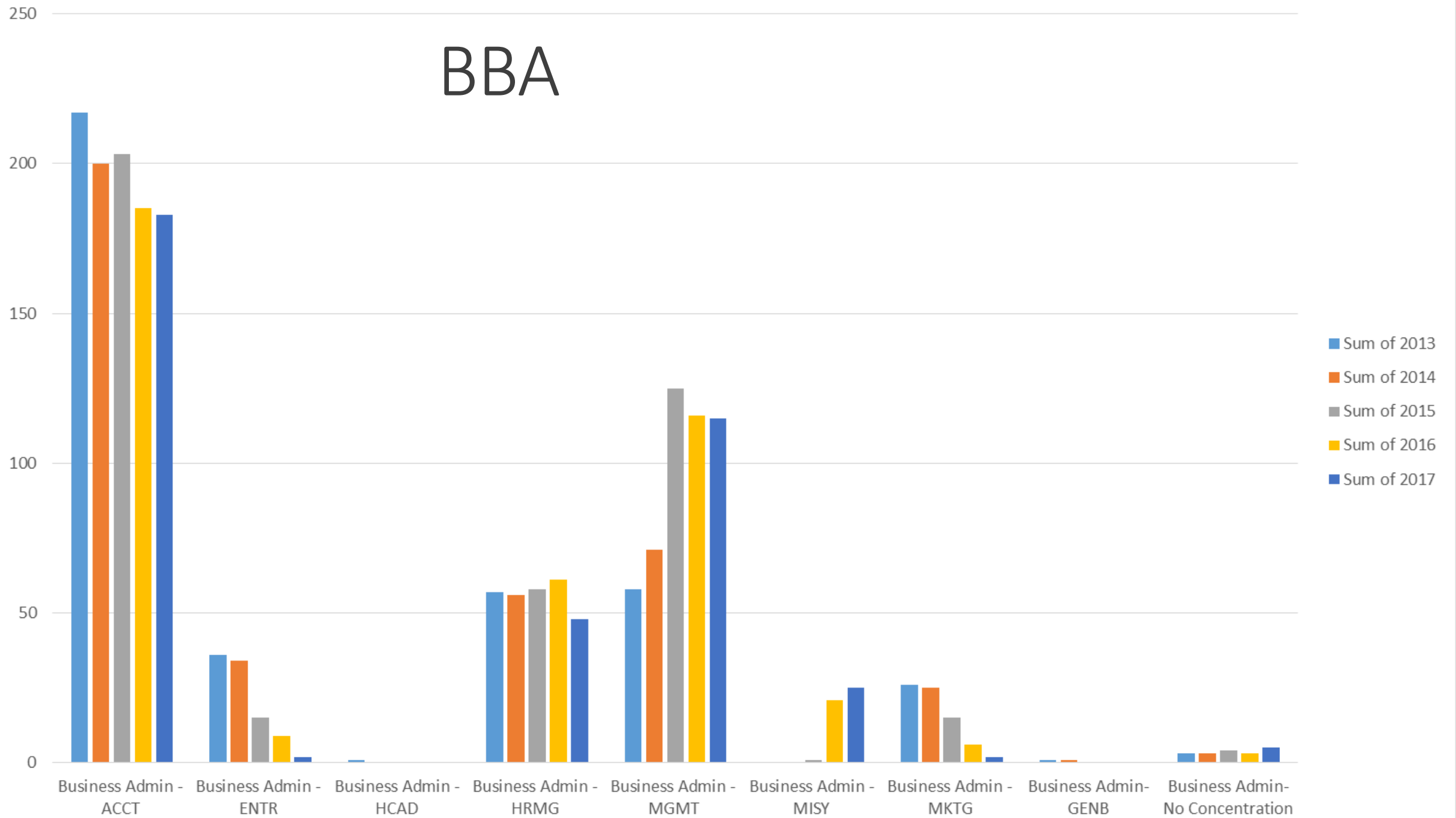
BA Social Sciences



AAS: Business Admin



BBA



Enrollment: Most Popular GER Courses?

Top Ten

Duplicated Headcount by Sections						
Subject	Course #	FY13	FY14	FY15	FY16	FY17
PSY	S101	211	215	208	223	212
BIOL	S111	247	259	232	237	209
MATH	S151				207	198
COMM	S111	244	221	200	223	149
HIST	S105	154	134	150	136	148
HIST	S106	132	120	130	126	134
BIOL	S112	170	143	138	122	132
ART	S160	133	110	113	106	116
SOC	S101	120	119	118	120	109
PSY	S250	94	87	75	92	100

Enrollment: Most Popular GER Subjects?

Top Ten

Duplicated Headcount by Sections					
Subject	FY13	FY14	FY15	FY16	FY17
BIOL	597	563	523	530	513
HIST	550	392	452	418	458
PSY	305	302	283	315	312
MATH				283	285
ANTH	250	208	244	256	244
COMM	320	307	265	300	232
ART	199	172	177	134	152
CHEM	190	187	156	170	137
SOC	140	154	135	162	122
SPAN	102	82	69	93	117

Enrollment: Future Steps

- UAS Leadership working on Strategic Enrollment Management Plan, with input from Retention and Recruitment Subcommittees. More to come on this.
- Chairs have been focused on enrollment management for their departments; we will have opportunities in advance of finalizing Spring 2018 for chairs to have school-wide perspective on class scheduling to help maximize student class opportunities.
- First Year Experience

Enrollment: First Year Experience

Natural Sciences may be exploring a First Year Experience paired with majors Biology course in Juneau.

Other conversations have taken place about other types of First Year Experience, including a one-credit UNIV 101.

I will be inviting faculty to meetings in the next few weeks to move the conversation along.

Goal:

To try out one (or two or even five) *First Year Experiences* for students entering Fall 2018.

High-Impact Practices

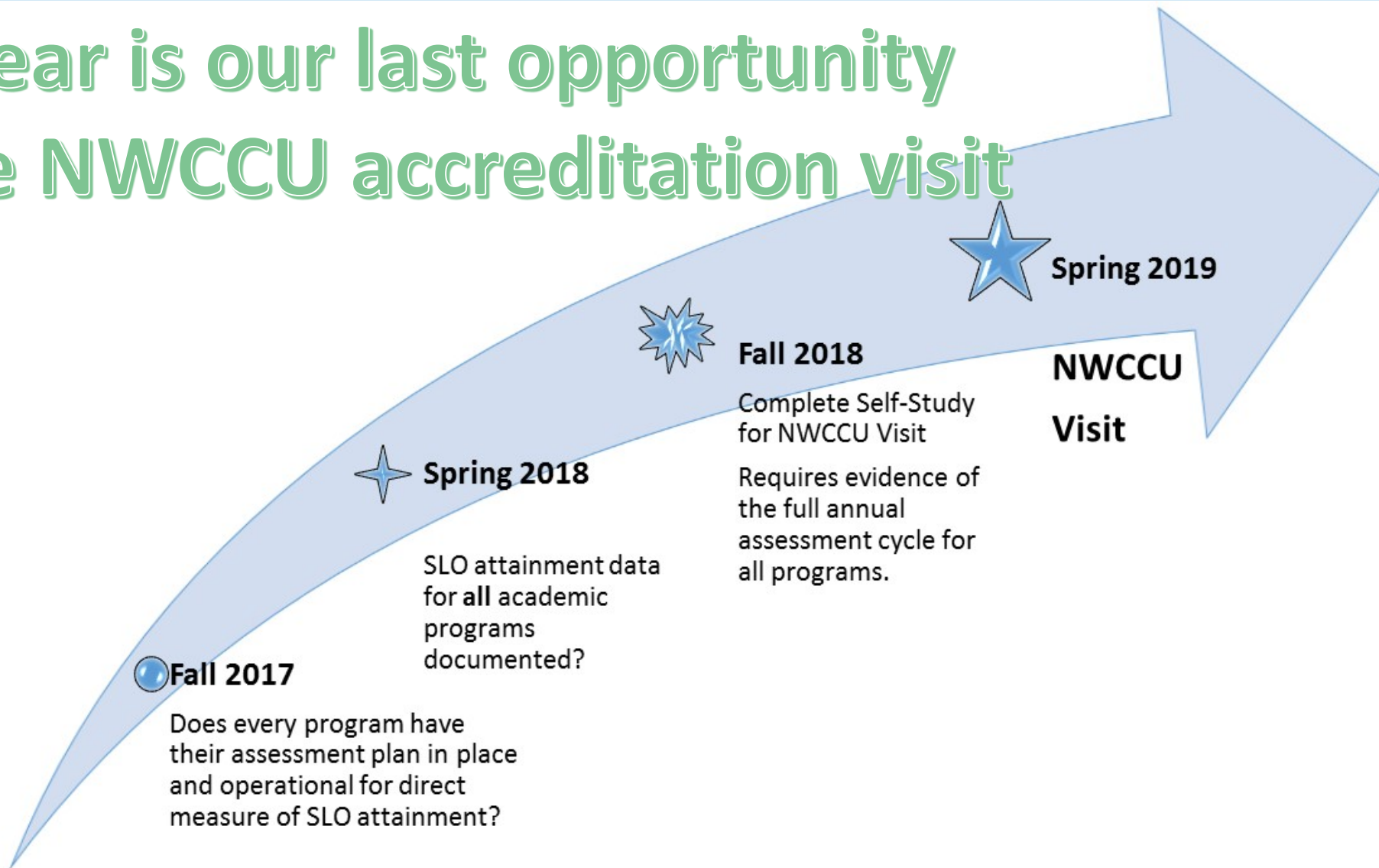
You do them already.

Let's communicate about them more clearly.

Send me 1-2 paragraphs, ideally with a photo or two, that describes a high-impact activity in your classroom. Departments may want to organize this so you, as a department, choose what items you especially want to highlight. I will then have these pushed out through social media or other public outlets (including the Arts and Sciences webpage).

Accreditation Cycle and Assessment

This year is our last opportunity
before NWCCU accreditation visit



Where does YOUR program stand?

Every program: double check: is there an assessment plan on file? If so, is it up to date, for a plan to assessment program student learning outcomes? Deadline: Oct. 31, 2017

Every program: collect and report on assessment of program student learning outcomes. Deadline: March 1, 2018.

Major holes:

- Associate of Arts:
as this is fundamentally a GER degree, the GER Assessment Plan and Report, being worked on by the GER Committee, could suffice.
- Associate of Sciences:
as there is a five year program review committee, they may take this one (Natural Sciences?)

Does your department or program want to have a conversation about assessment?

Having been a peer reviewer for NWCCU, I'd be happy to join any program or department for a conversation on assessment.

Six-Year Course Sequence

<http://www.uas.alaska.edu/provost/6-yr-course-sequence.html>

This item is related to enrollment: can students get the courses they need, when they need them?

- Do distance students have the courses they need?
- Do residential students have the courses they need?
- If an academic program has changed, does the Six Year Course Sequence reflect that change?

This published Sequence has two purposes:

1. student advising
2. guidance for chairs, deans and directors about what courses need to be offered.

At each Department meeting this morning, please review the [Six-Year Course Sequence](#). If Chairs could get back to me on their review, with any changes, no later than Sept. 15? That way plan can be updated in time for Fall scheduling.

Coping with Reduced State Funding and Reduced Tuition Revenue (handout)

FY17→ FY18 School of Arts and Sciences budget down 6% (less state funding support and less tuition revenue).

We are also looking at a potentially significant tuition shortfall in FY18 of \$260,00 (not yet reflected in our departmental budget).

Focus was kept largely on staff and nonpersonnel components of the budget. We were able to cope without having to have layoffs, by concentrating functions in a HUB model. See handout.

HUB Model for Staff Functions

This will require some changes for all of us; your patience and problem-solving perspective is much appreciated.

Transitions

Communicate concerns. Patience and tolerance is valuable. This is a work in progress.

Also, new department, that has different traditions and approaches (e.g., 90% online instruction). We are all going to learn from each other. I'm excited about emerging possibilities in the realm of interdisciplinarity – conversations have already begun between faculty in the MPA and Alaska Native Studies.

Enjoy Campus Life. Join in Co-curricular activities

A few examples for Juneau Campus:

Friday night, August 25, the first Academic Open House for new students (6 pm)

Power and Privilege (Nov. 7)

Evening at Egan (throughout the year)

Perseverance Theatre UAS Nights (TBA)

For this Academic Year

As in every academic year, its about the students.

Learning, retention, recruitment, engagement.

Enjoy!!!